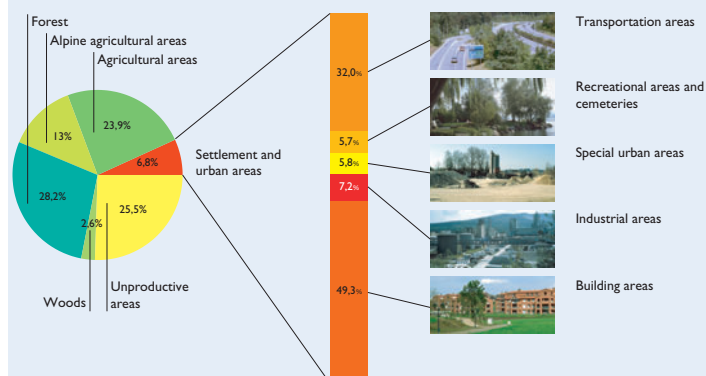


# Land use statistics of Switzerland

## Land use – settlement and urban areas

### Structure of land use 1992/97

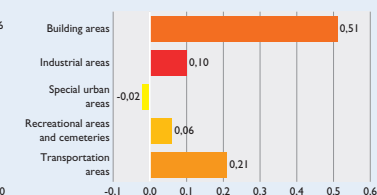


### Changes in land use 1979/85–1992/97

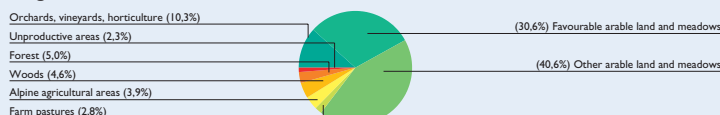
#### Main categories, in m<sup>2</sup> per second



#### Settlement and urban areas, in m<sup>2</sup> per second

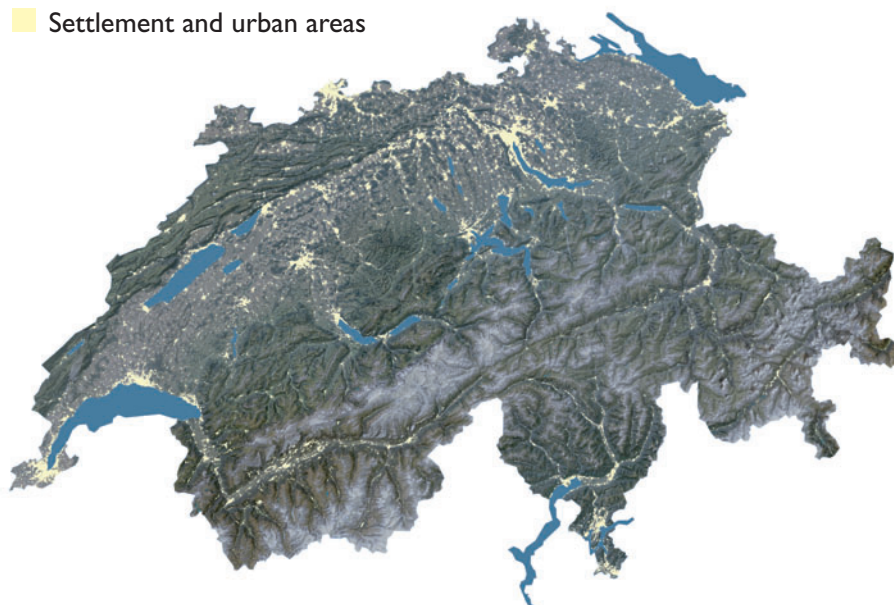


#### Origin of new settlement and urban areas



## Settlement 1992/97

### Settlement and urban areas



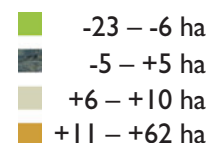
Uncontrolled urban spread as well as land pressure on the best agricultural areas continues. The fastest growth can be seen in semi-urban communes with excellent traffic connections to nearby major cities. By now, the average Swiss inhabitant already requires 400 square meters of land for settlement purposes (including traffic, recreation ...).

In the past twelve years, agriculture has lost 482 square kilometers of cultivated land. Nearly 62% of this land is now used for settlement purposes – mainly the best locations in valleys and plains. The area decreases observed in mountainous regions refer to the conversion of alpine agricultural areas into unproductive or wooded areas.

Every day, 11 hectares of agricultural land disappear in Switzerland – this equals 1.3 square meters per second. About two thirds of this – mainly in the Central Plain – is converted to settlement and urban areas. Most of the remaining land consists of abandoned meadows and pastures on which new forest gradually emerges.

## Changes 1979/85–92/97

### Changes in settlement and urban areas, per 4 km<sup>2</sup>



## Neuchâtel 1968–1998



## Marin-Epagnier 1982–1998



SWISSIMAGE © 2003 swisstopo (BA035658)