

Fig. 33B-2-001. $\text{KH}_2\text{P}_{1-x}\text{As}_x\text{O}_4$ (KDP–KDA). Θ_f vs. x [85Cho].

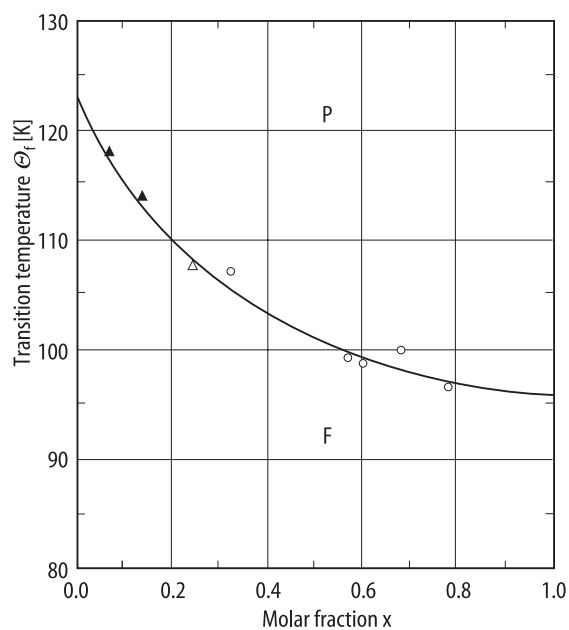


Fig. 33B-2-002. $\text{KH}_2\text{P}_{1-x}\text{As}_x\text{O}_4$ (KDP–KDA). Θ_f vs. x [94Lee, 85Cho]. Open circle: [94Lee], open triangle: [85Cho].

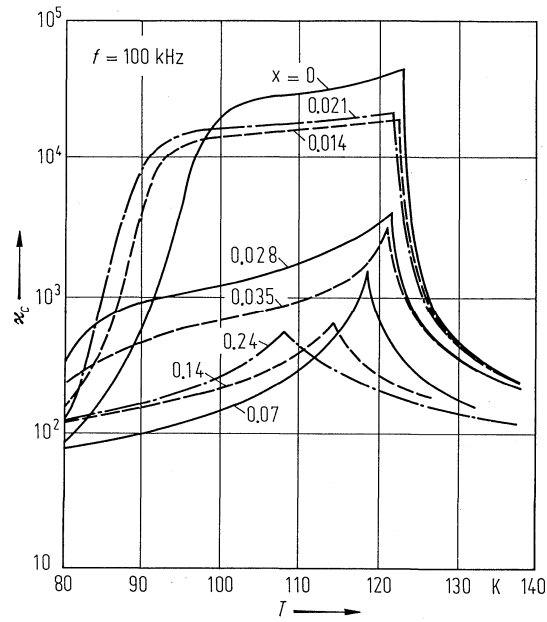


Fig. 33B-2-003. $\text{KH}_2\text{P}_{1-x}\text{As}_x\text{O}_4$ (KDP-KDA). κ_c vs. T [85Cho]. Parameter: x .

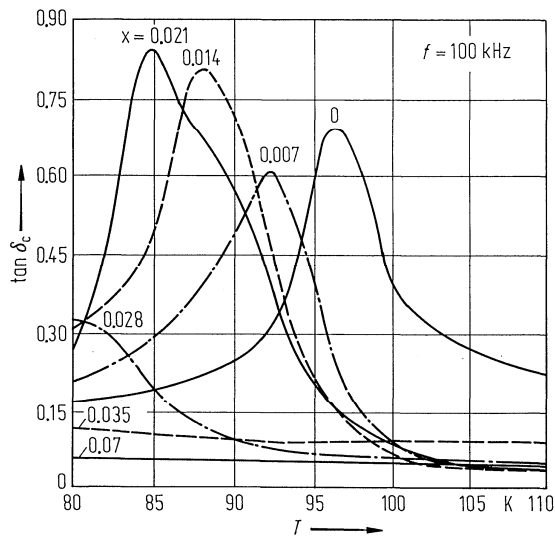


Fig. 33B-2-004. $\text{KH}_2\text{P}_{1-x}\text{As}_x\text{O}_4$ (KDP-KDA). $\tan \delta_c$ vs. T [85Cho]. Parameter: x . $\tan \delta_c$: dielectric loss tangent along the c axis.

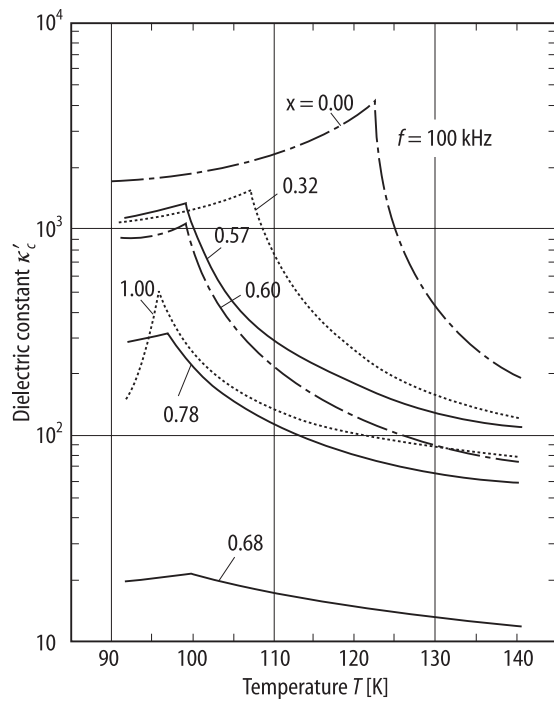


Fig. 33B-2-005. $\text{KH}_2\text{P}_{1-x}\text{As}_x\text{O}_4$ (KDP-KDA). κ'_c vs. T [94Lee]. Parameter: x .