

Fig. 39B-10-001. $[\text{N}(\text{CH}_3)_4]_2\text{Zn}(\text{Cl}_{1-x}\text{Br}_x)_4$. Θ vs. x [84Col]. q_c : the reciprocal lattice vector component in units of that in phase I. inc.: incommensurately modulated phase.

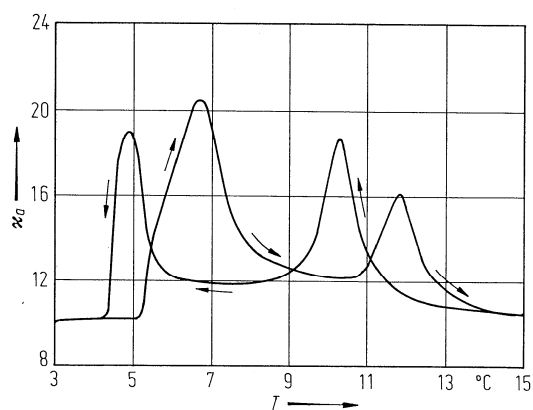


Fig. 39B-10-002. $[\text{N}(\text{CH}_3)_4]_2\text{Zn}(\text{Cl}_{0.95}\text{Br}_{0.05})_4$. κ_a vs. T [87Ben].

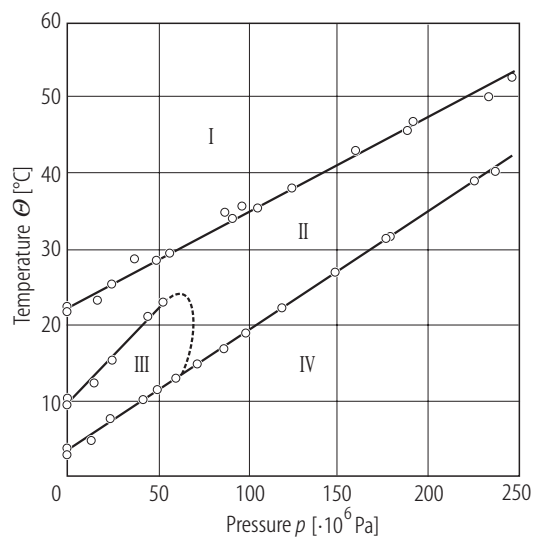


Fig. 39B-10-003. $[\text{N}(\text{CH}_3)_4]_2\text{Zn}(\text{Cl}_{0.95}\text{Br}_{0.05})_4$. Θ vs. p [91Ges].

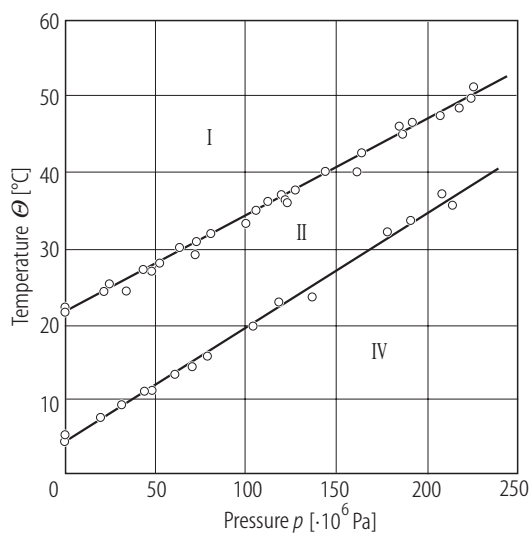


Fig. 39B-10-004. $[\text{N}(\text{CH}_3)_4]_2\text{Zn}(\text{Cl}_{0.925}\text{Br}_{0.075})_4$. Θ vs. p [91Ges].