

Running the **DEAFrontier** Software

Before you run the DEAFrontier software.....	1
Excel Macro Security.....	2
Load Excel Solver in Excel 97, 2000 and 2003 (XP)	4
Load Excel Solver in Excel 2007.....	5
Run the DEAFrontier Software	7

© Joe Zhu

www.deafrontier.com

Running the DEAFrontier Software

Before you run the DEAFrontier software

Before you load the DEAFrontierFree software, the Excel program must be open/loaded first. And then the Solver Parameters dialog box must at least be displayed once in your Excel session.

Otherwise, an error (shown in Figure 1) may occur when you run the software under Excel 97, 2000 or 2003 and the Excel 2007 may not be responding.

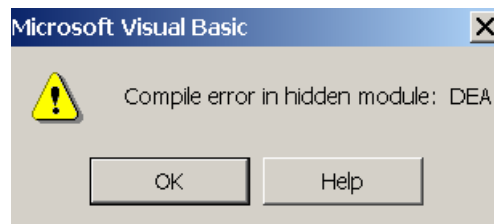


Figure 1

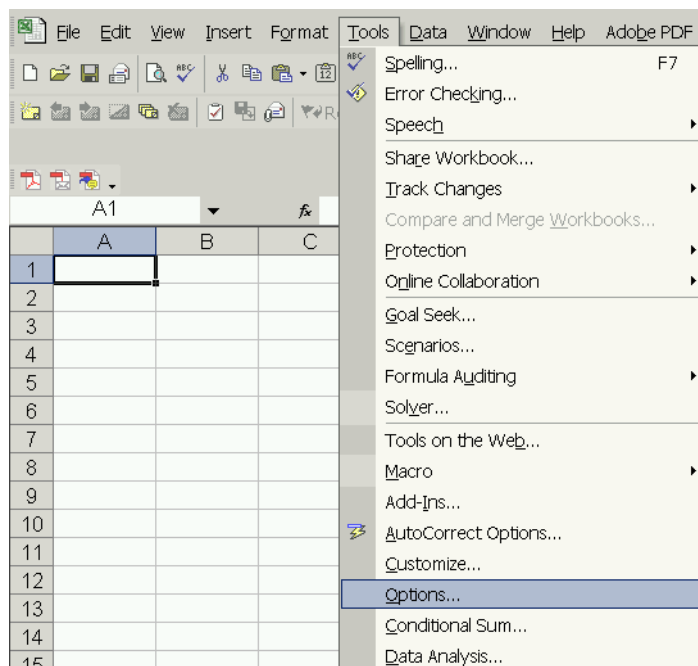
This error message means that the Excel Solver is not found by the DEAFrontier software. *(Under Excel 97, 2000 or 2003, if the DEAFrontier software is installed in the directory where the Excel Solver is installed, you may not need to load the Excel Solver first.)*

Running the DEAFrontier Software

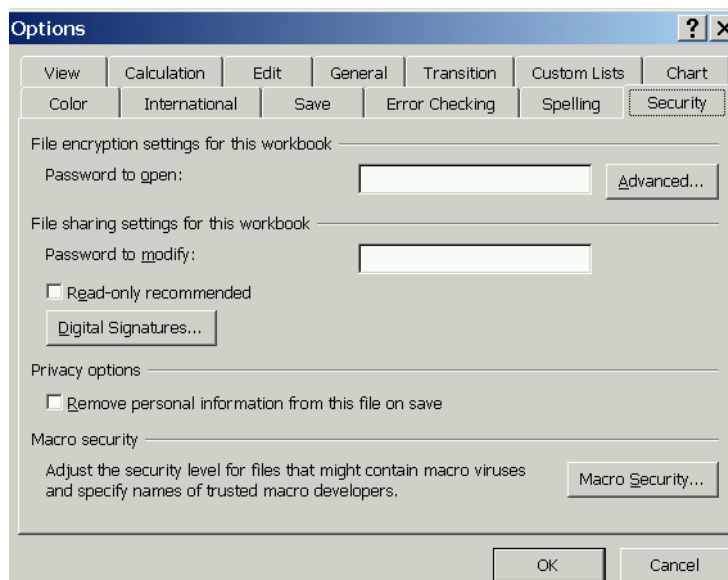
Excel Macro Security

Excel 97, 2000 or 2003

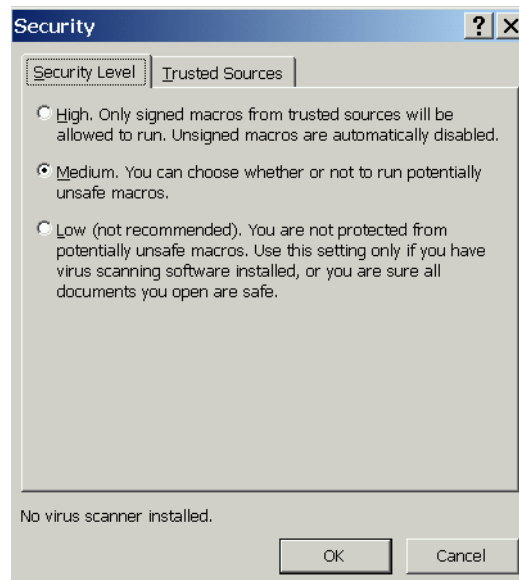
Please also set the Macro Security to Medium Level in the Excel. This can be done by selecting the Tools/Options menu item as shown in the following



In the Option menu item, click the Macro Security button and then select the “Medium” option.

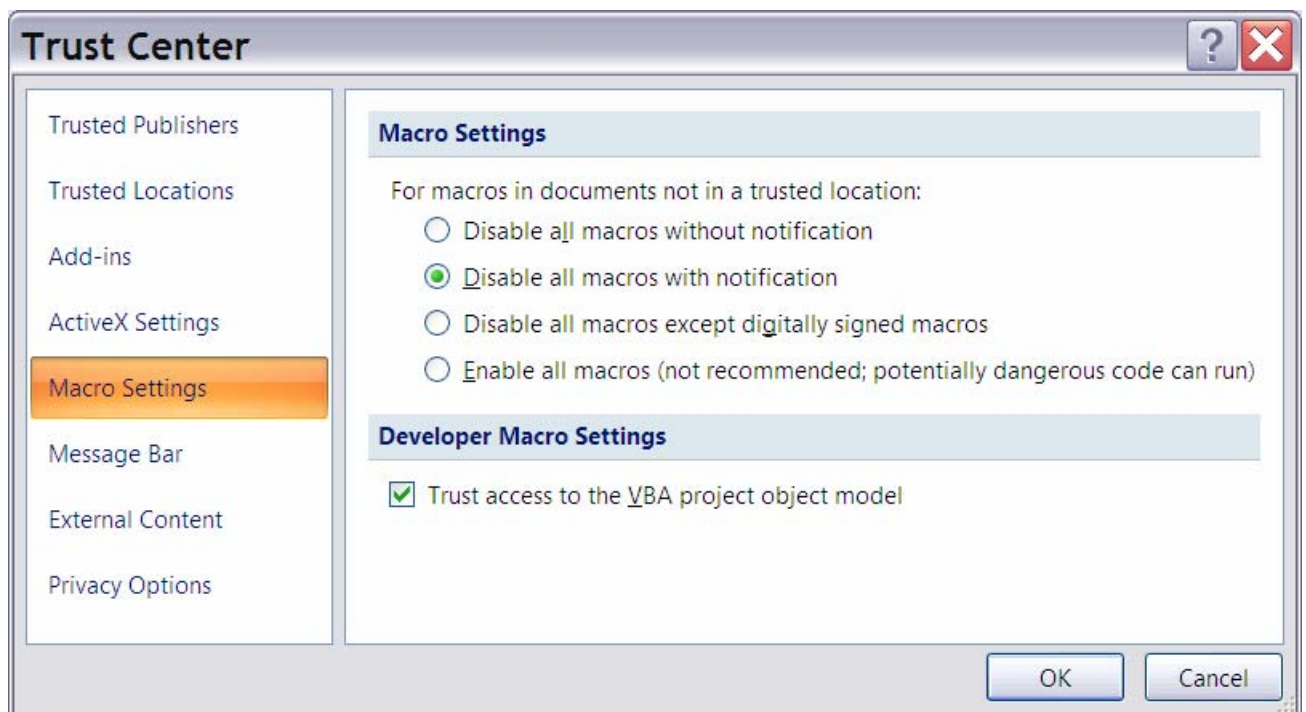


Running the DEAFrontier Software



Excel 2007

You need to do this in the Trust Center. You may check (1) enable all macros and (2) Trust access to the VBA project object model. You may also need to add the subdirectory where the DEAFrontier software is located as “Trusted Locations”.

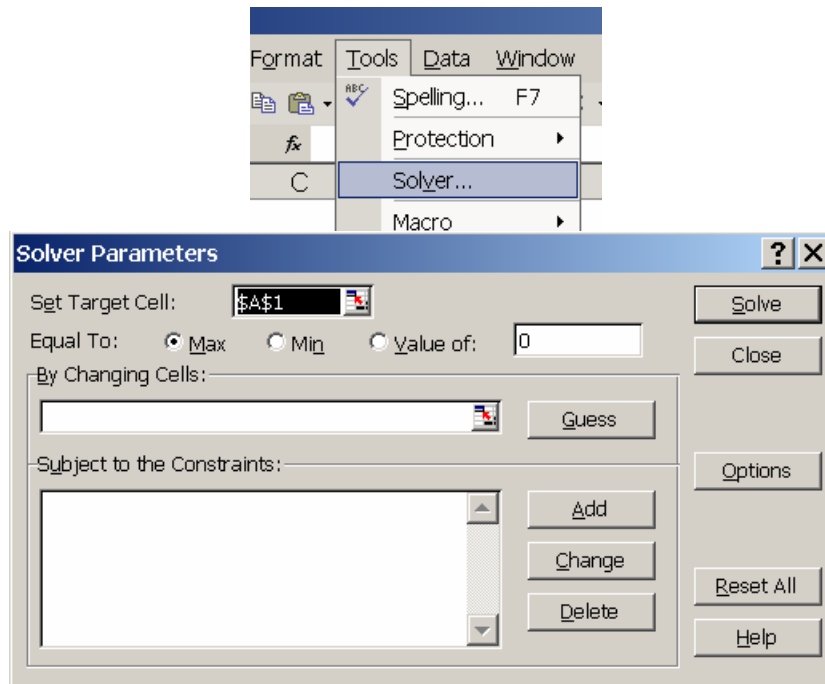


Running the DEAFrontier Software

Load Excel Solver in Excel 97, 2000 and 2003 (XP)

You may use the following steps. (Close the DEAFrontier if it is already opened using the “Quit” menu item.)

Step 1: Open Excel, and then load Solver parameters dialog box by using the Tools/Solver menu item.



Step 2: Click Close to close the Solver parameters dialog box. Now, the Solver has been loaded.

If Solver does not exist in the Tools menu, you need to select Tools/Add-Ins, and check the Solver box, as shown in Figure 2. (If Solver does not show in the Add-Ins, you need to install the Solver first.)

Running the DEAFrontier Software

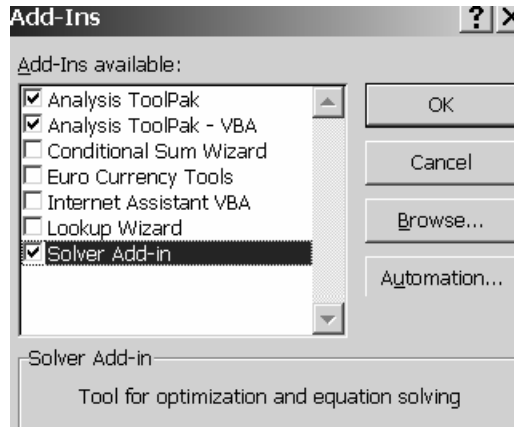



Figure 2

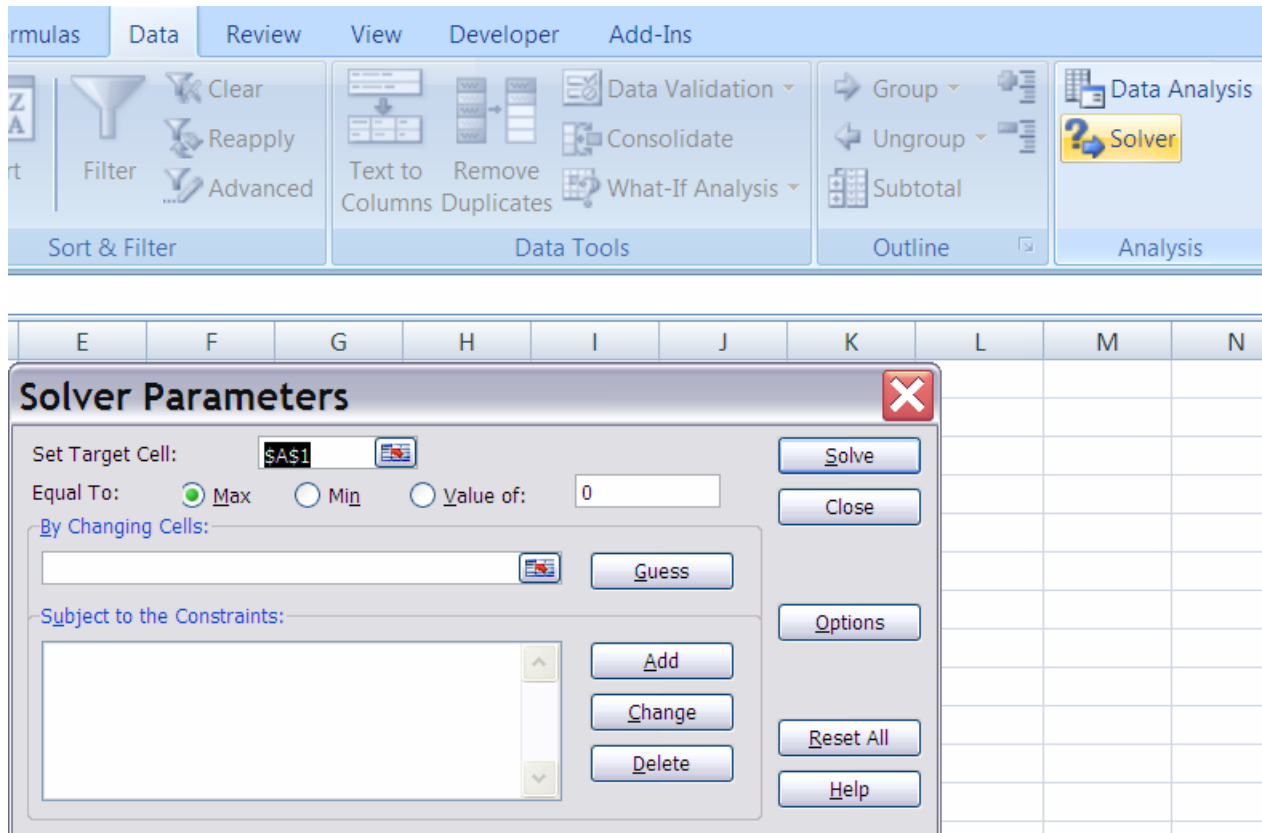
Load Excel Solver in Excel 2007

1. Click the **Microsoft Office Button** , and then click **Excel Options**.
2. Click **Add-Ins**, and then in the **Manage** box, select **Excel Add-ins**.
3. Click **Go**.
4. In the **Add-Ins available** box, select the **Solver Add-in** check box, and then click **OK**.

If you get prompted that the Solver Add-in is not currently installed on your computer, click **Yes** to install it.

5. After you load the Solver Add-in, the **Solver** command is available in the **Analysis** group on the **Data** tab.

Running the DEAFrontier Software



Please make sure that the Excel Solver works properly. One can download a test file at <http://www.deafrontier.com/deasupport/>.)

Running the DEAFrontier Software

Run the DEAFrontier Software

Load the DEA software by opening (i) “DEAFrontier Limited.xla” for Excel 97, 2000 and 2003, or (ii) “DEAFrontier Limited2007.xlam” for Excel 2007. **Under Excel 2007, the user may need to**

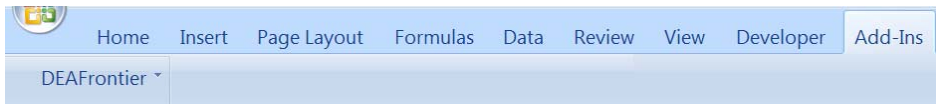
Step 1: open the Excel

Step 2: load the Excel Solver

Step 3: load the DEAFrontier software

You will see a new Menu item “DEAFrontier” or “DEA”¹ at the end of Excel Menu. Now, the software is ready to run. (Please see the Format for Data Sheet for proper setup of data sets.)

For Excel 2007: to locate the DEA Menu, Office 2007 users select the Add-Ins tab and navigate to the DEA menu option. The DEA menus will not always be visible, as they were in Office 2003.



¹ This depends on the version of the DEAFrontier software you are using.