

Figure 1: "Banana Shape" Benchmark in Static Mixture Initialization

benchest

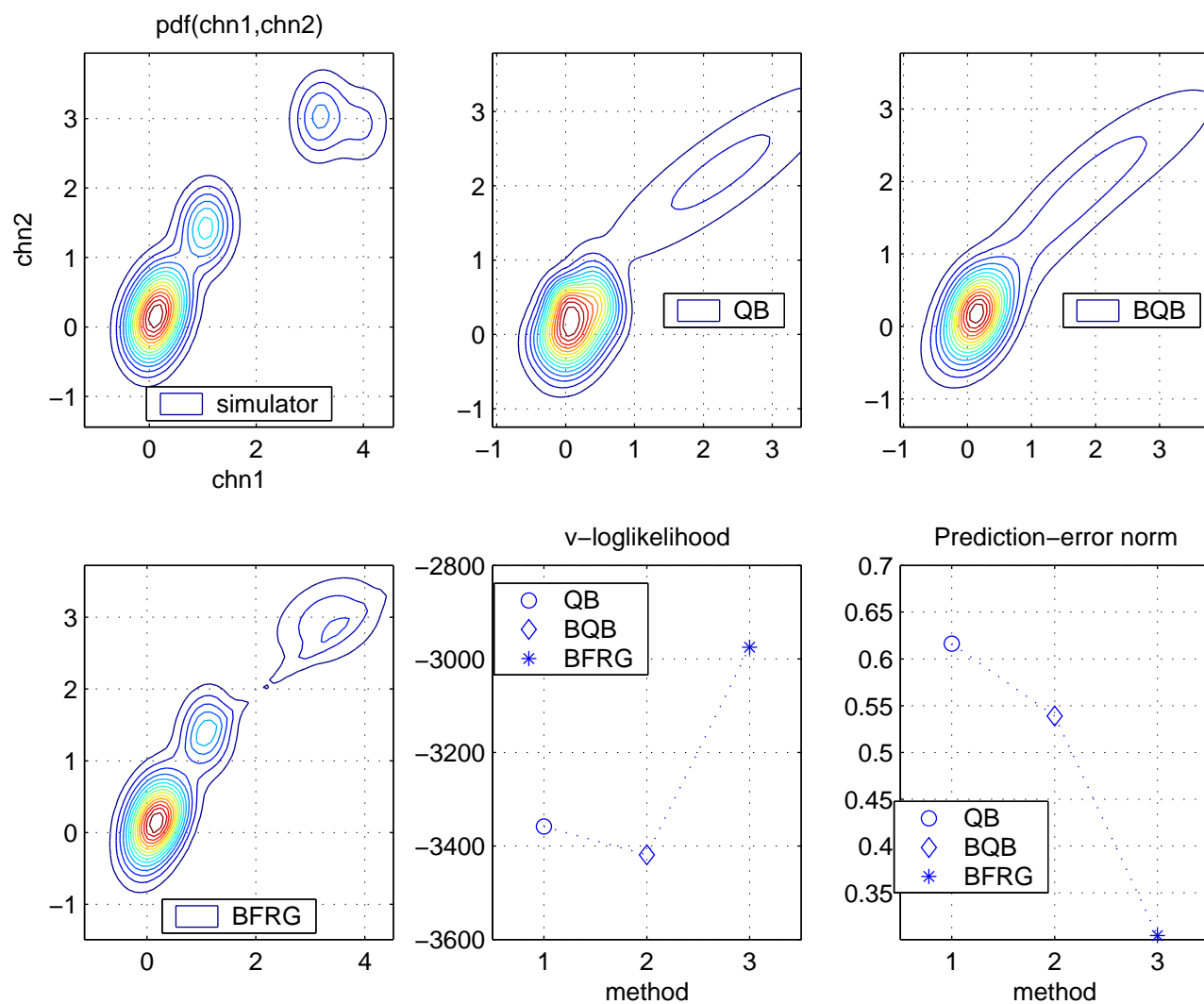


Figure 2: Efficiency and Computational Demands of Mixture Estimation Algorithms

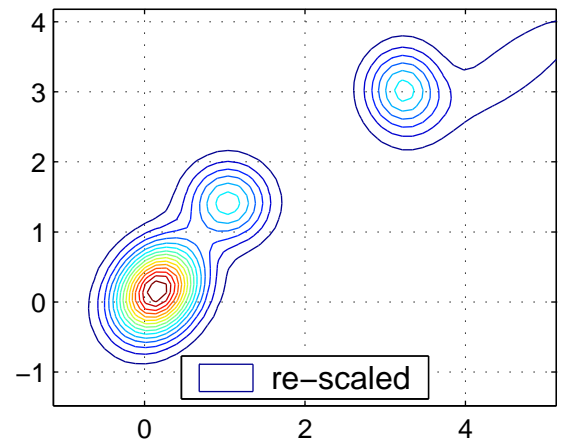
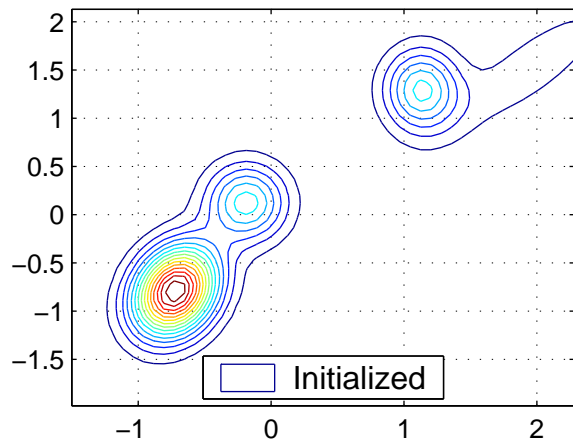
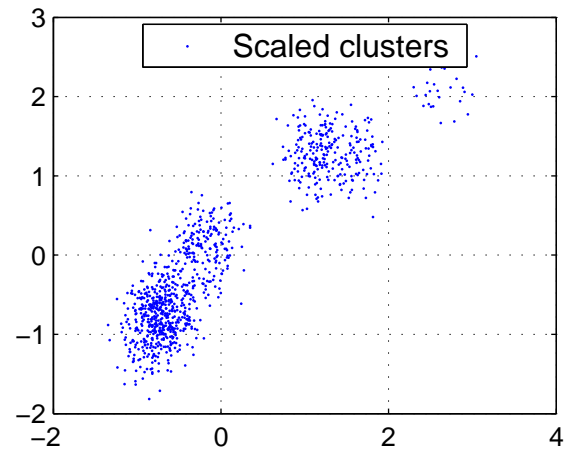
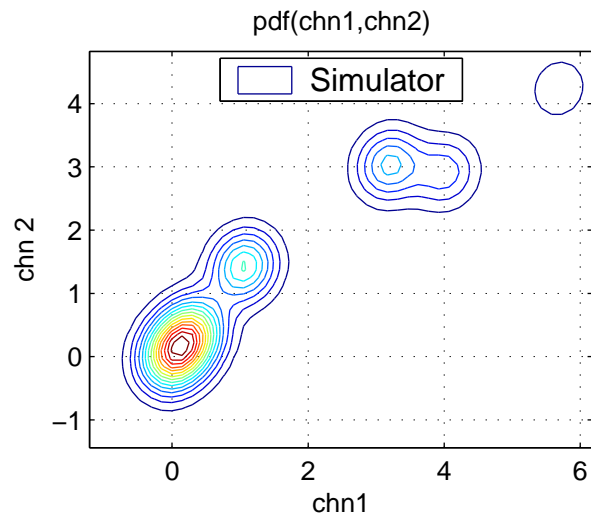


Figure 3: Efficiency and Computational Demands of Static Mixture Initialization

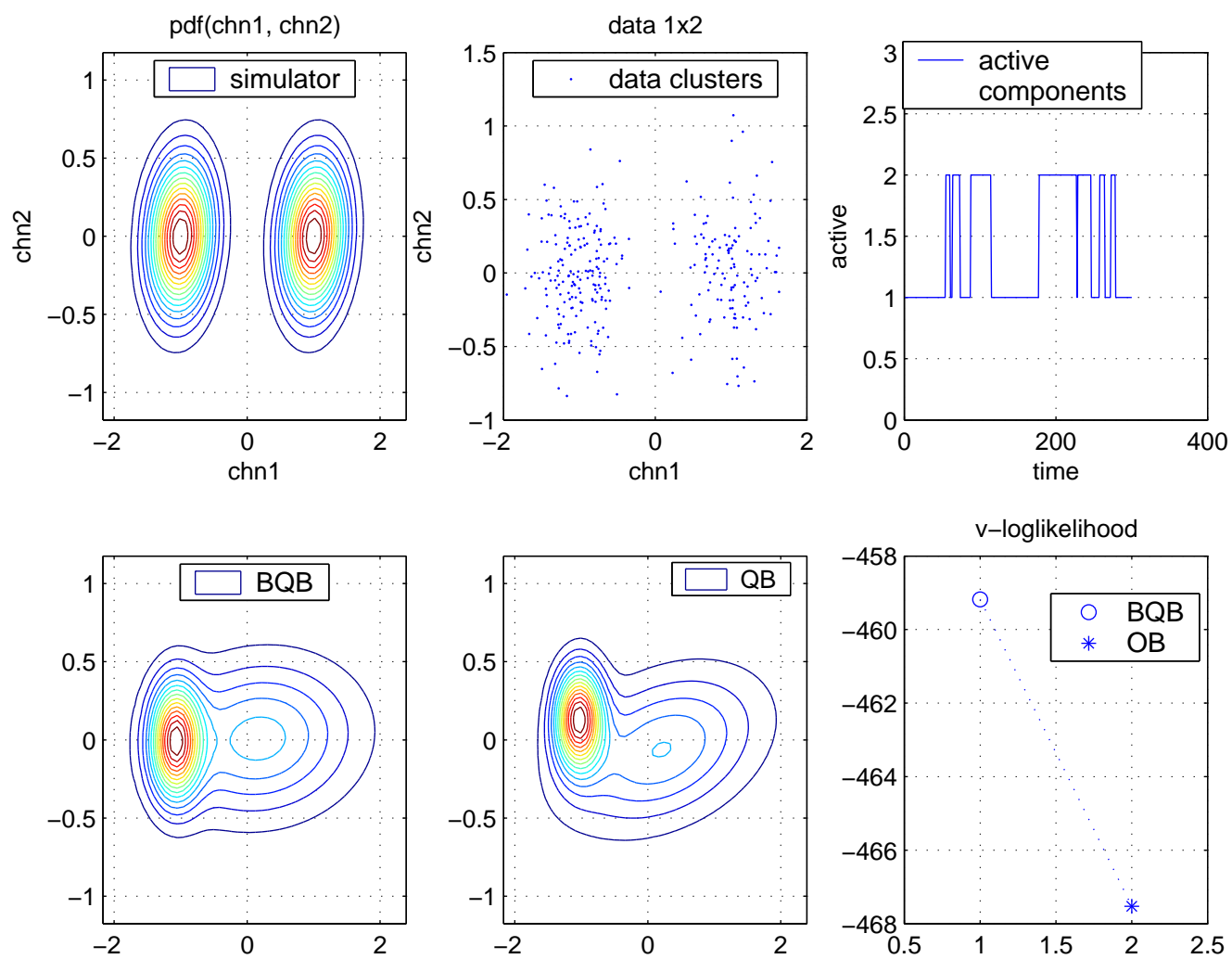


Figure 4: Mixture Estimation Based on Batch Quasi-Bayes Algorithm (BQB)

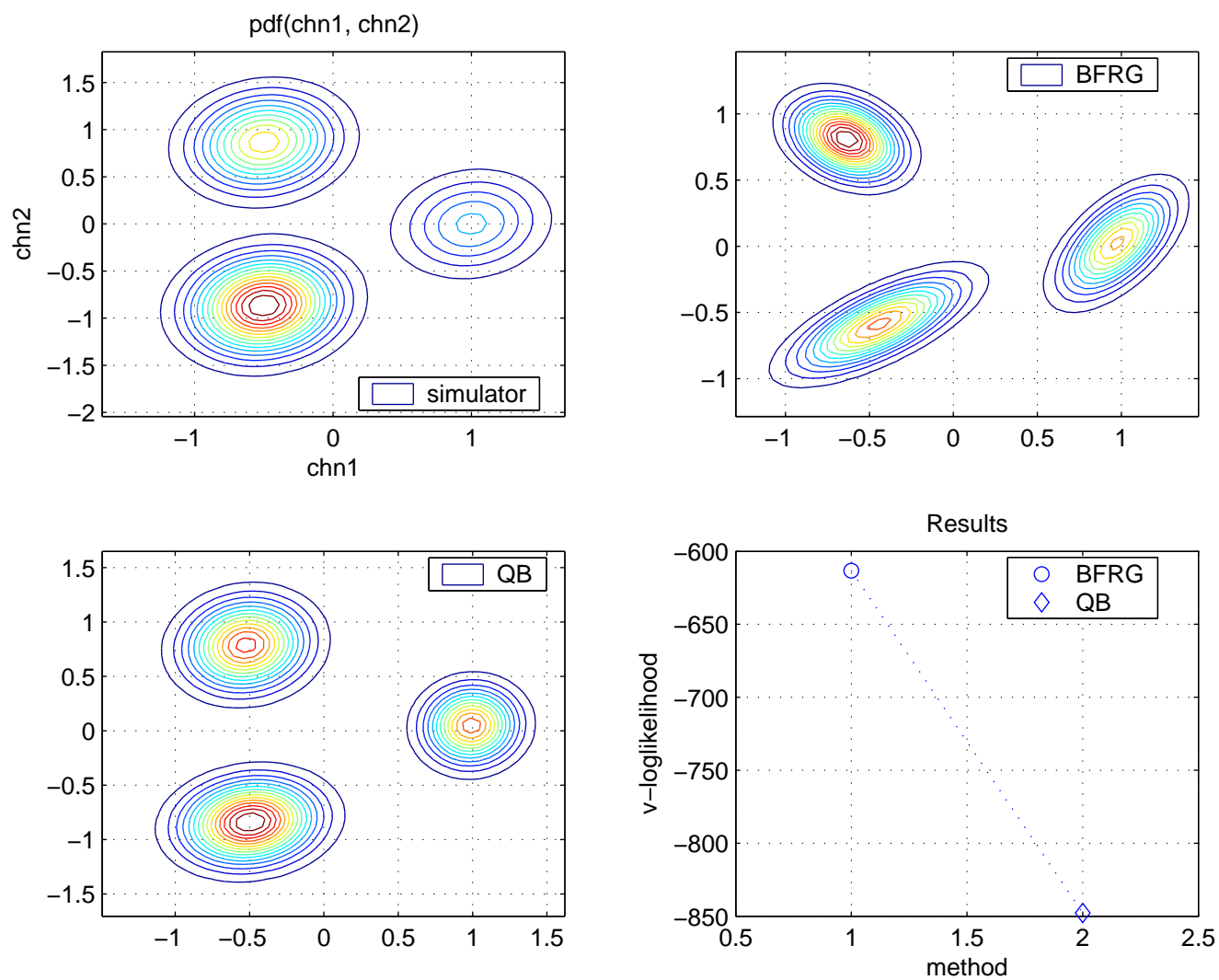


Figure 5: Mixture Estimation Based on Branching by Forgetting Algorithm (BFRG)

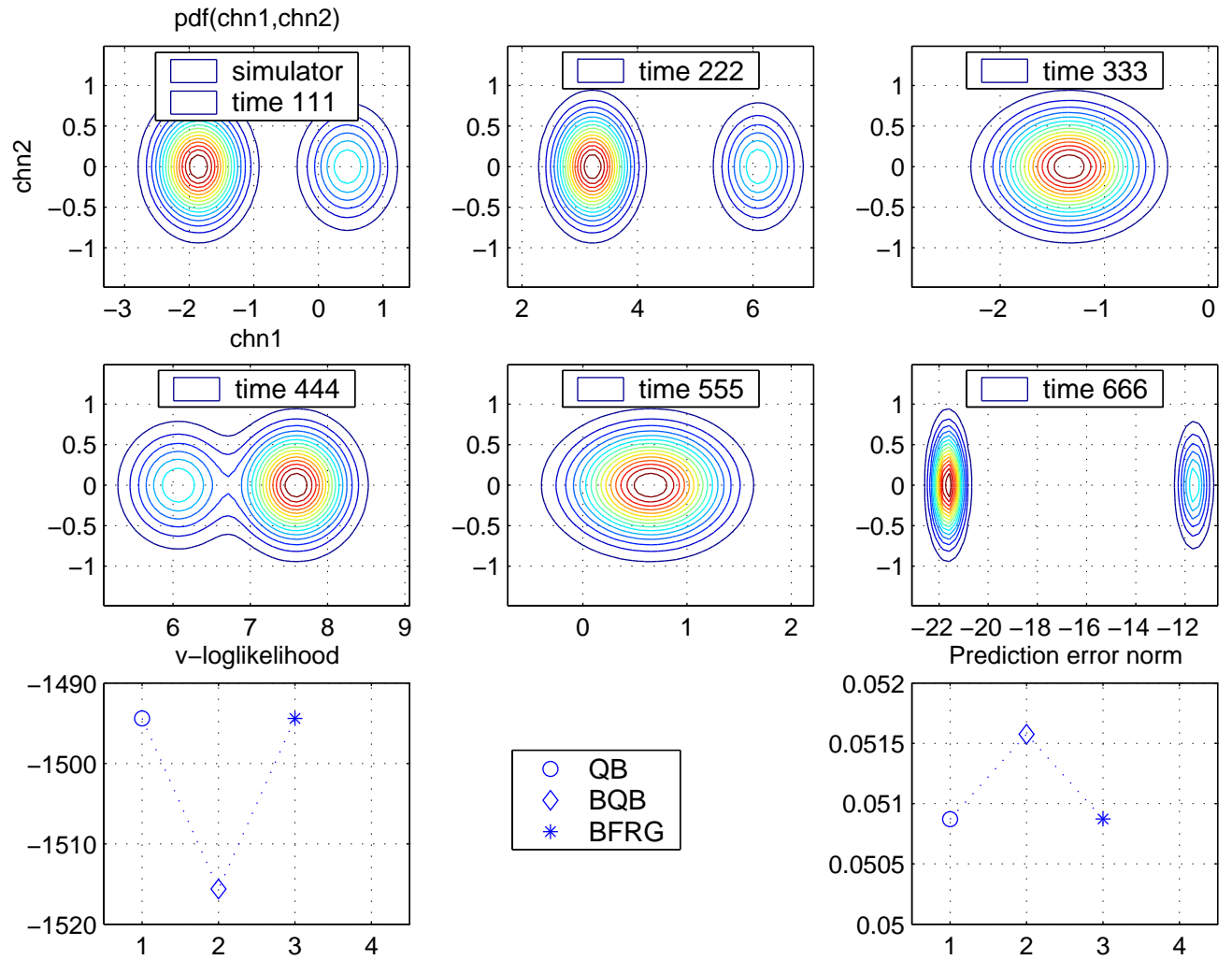


Figure 6: Comparison of Mixture Estimation Algorithms – Dynamic Case

estcmpsta

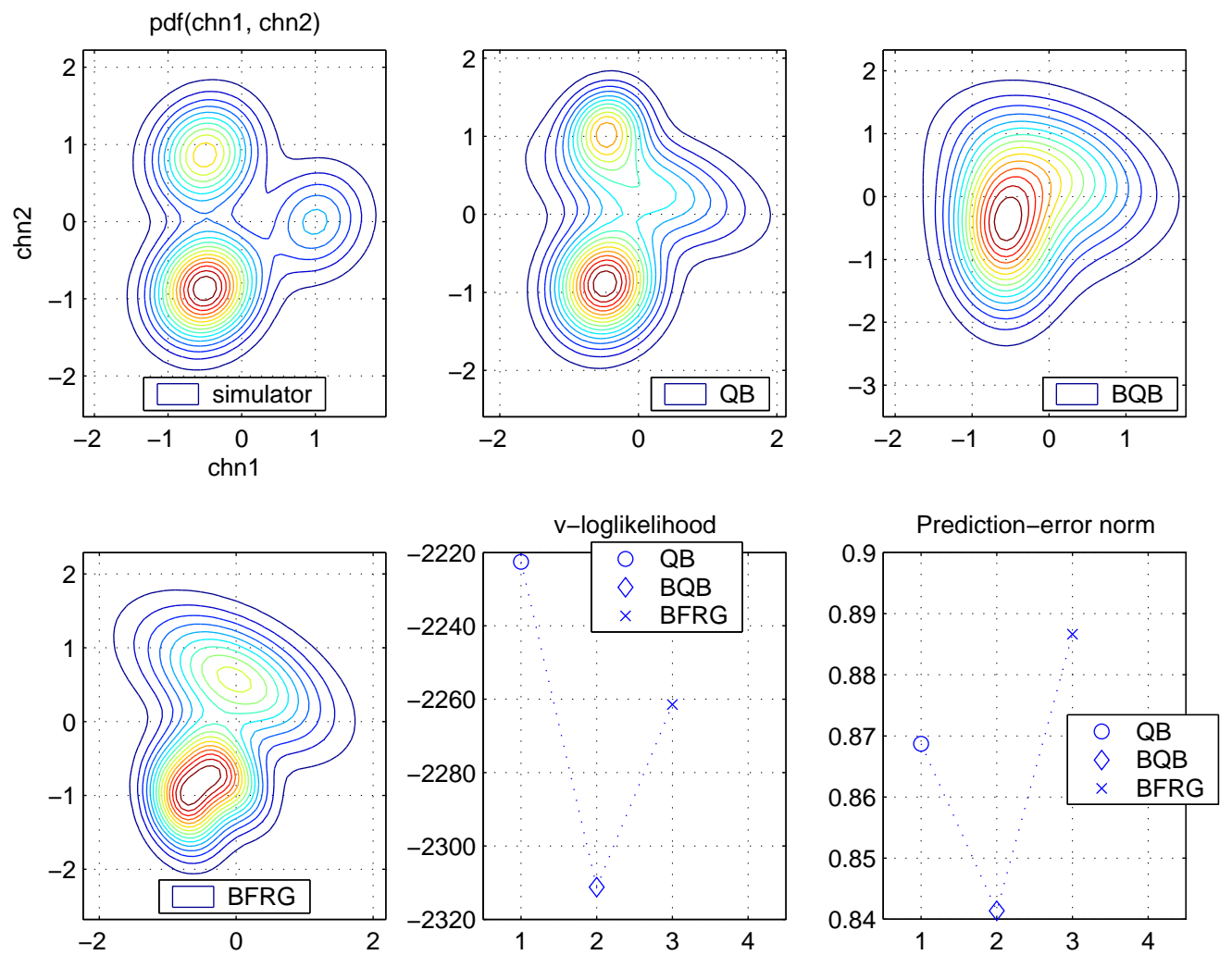


Figure 7: Comparison of Mixture Estimation Algorithms – Static Case

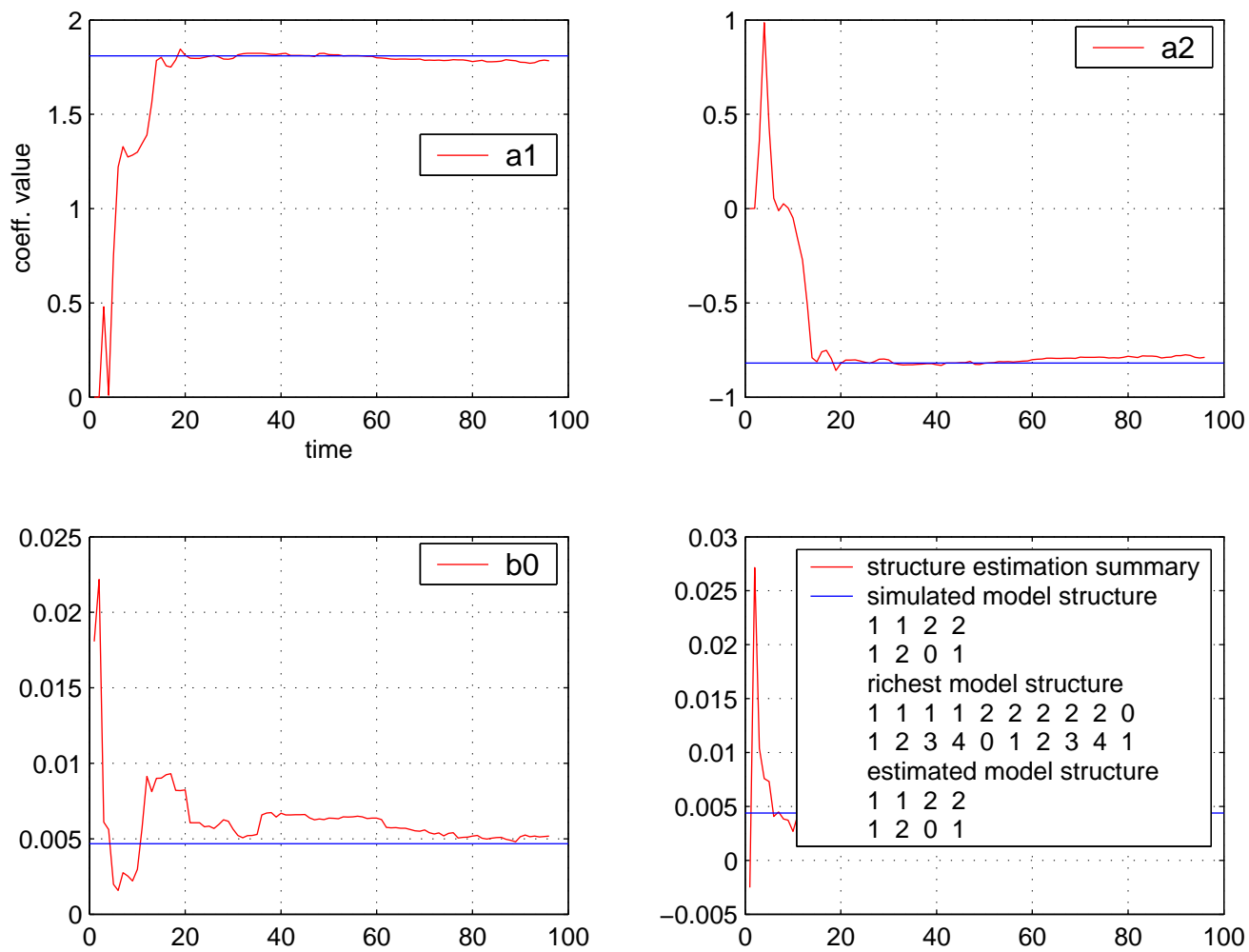


Figure 8: Parameter and Structure Estimation of Normal Factor



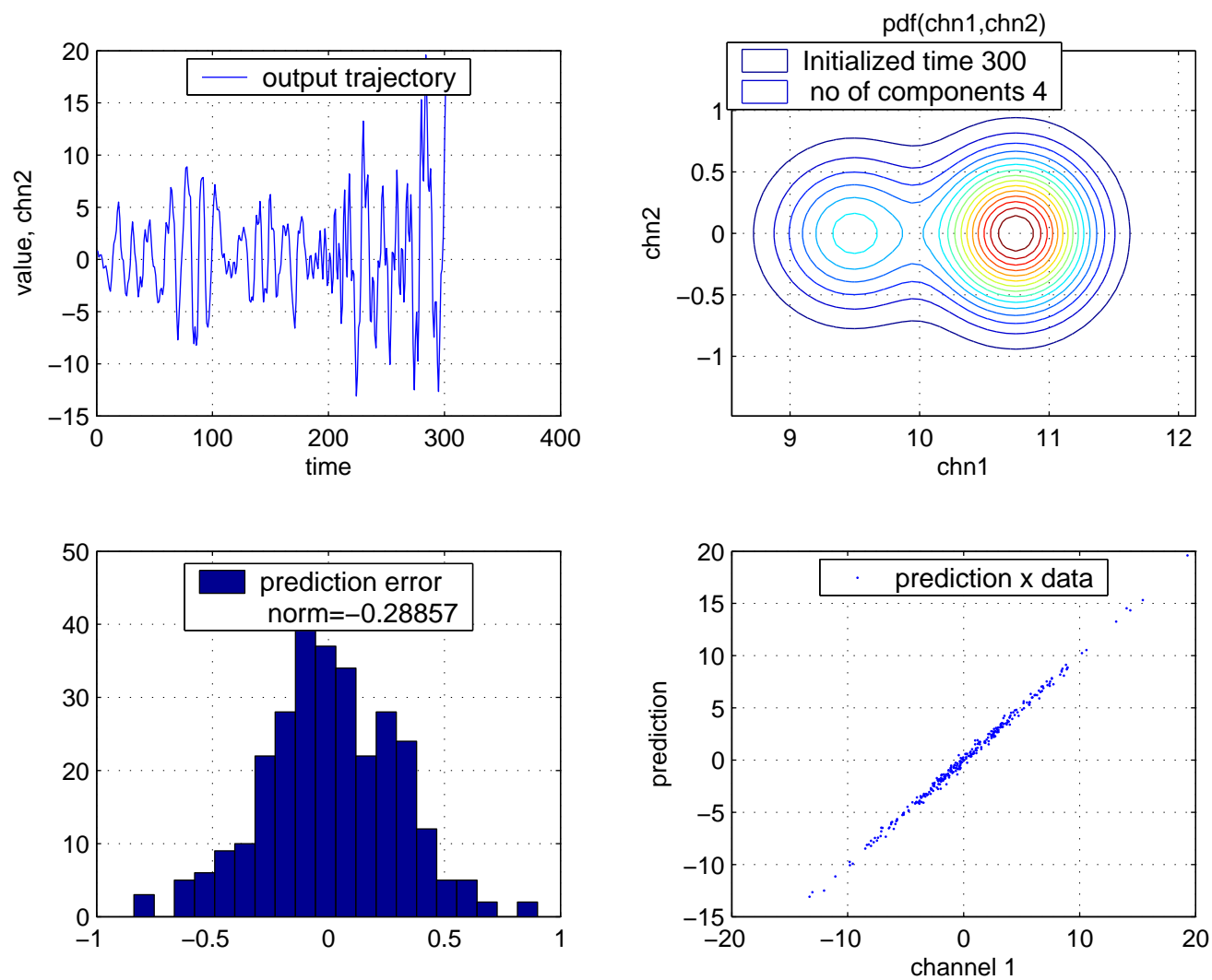


Figure 9: Initialization of Estimation - Dynamic Mixture

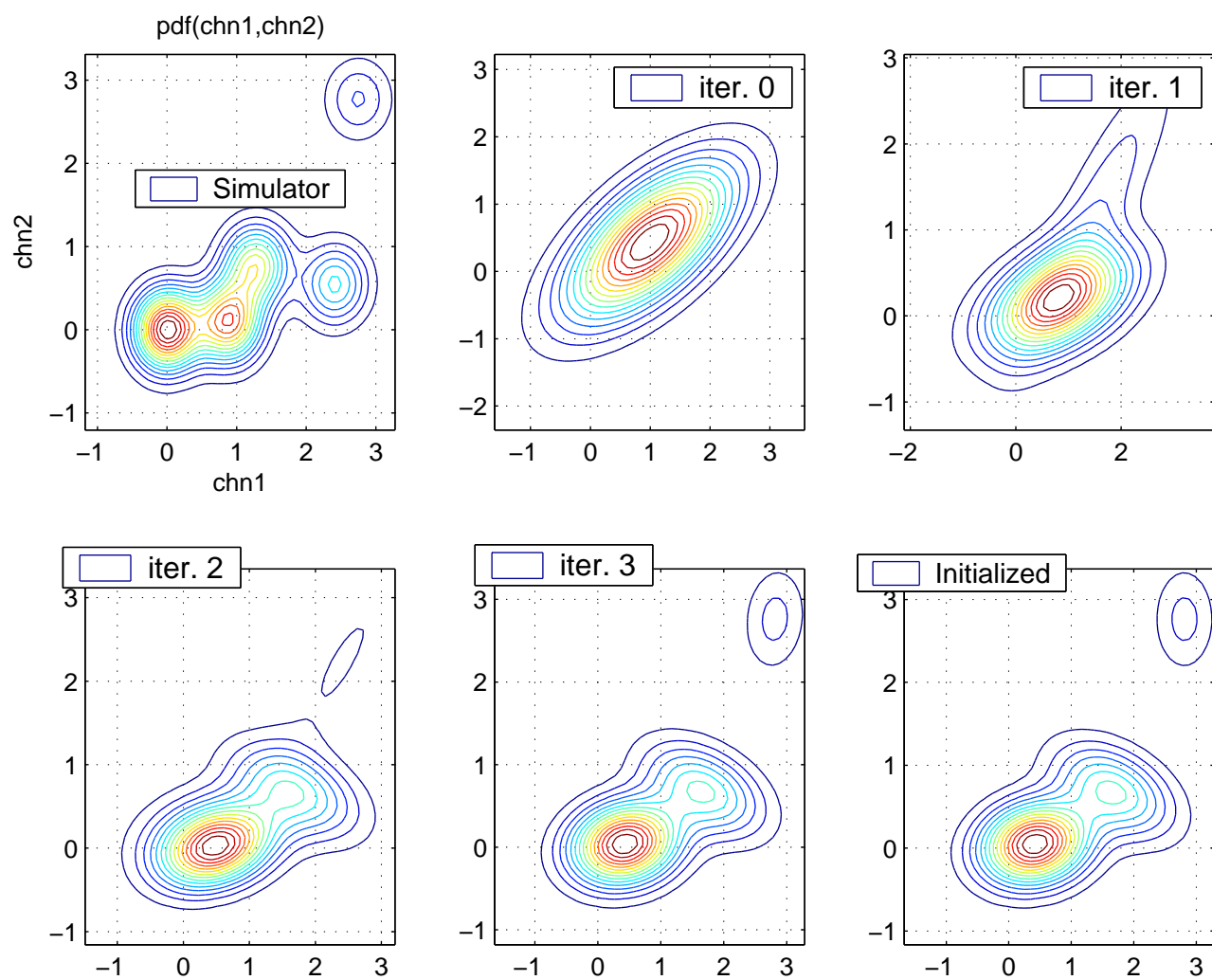


Figure 10: Scanning of Static Mixture Initialization

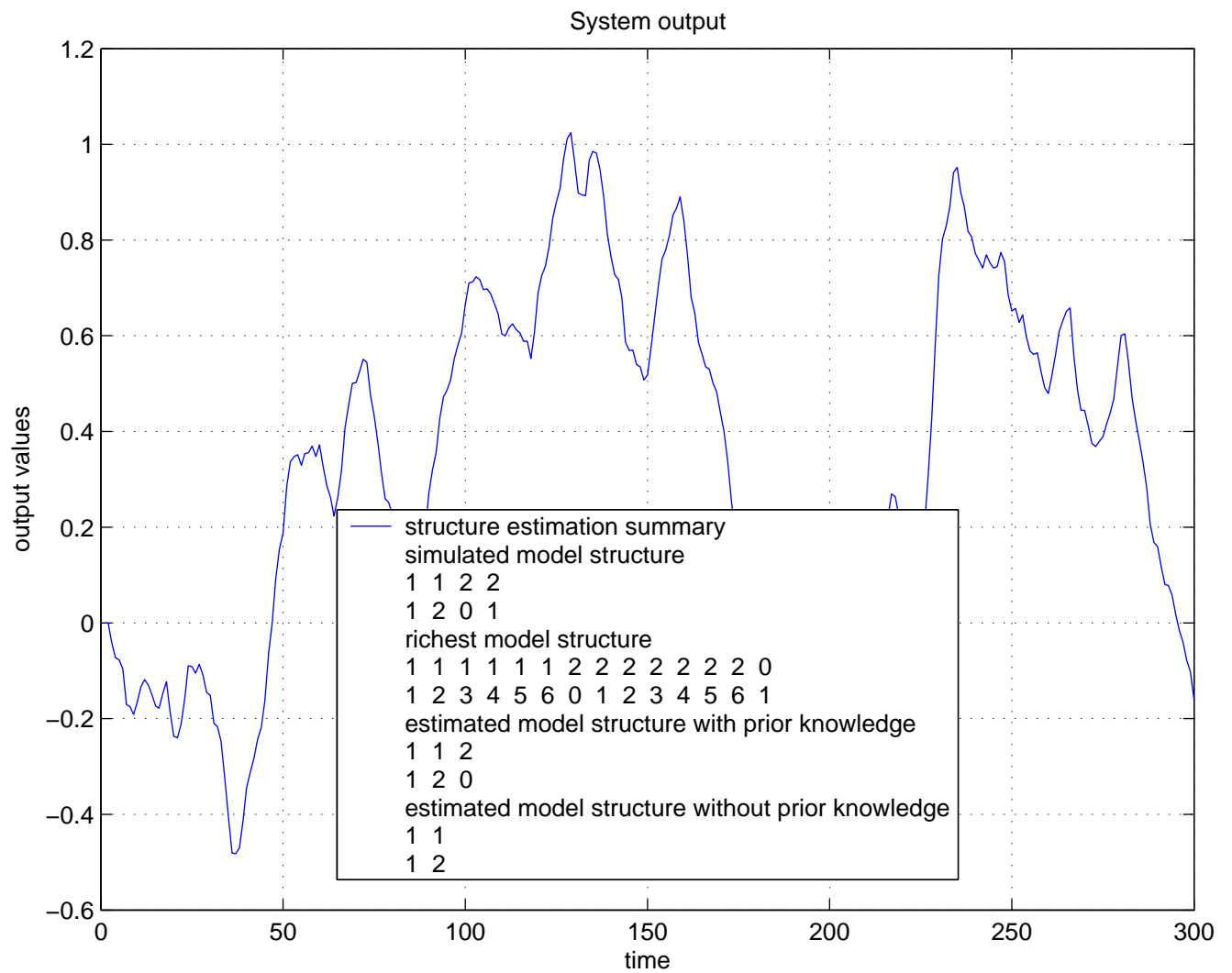


Figure 11: Prior Knowledge in Structure Estimation

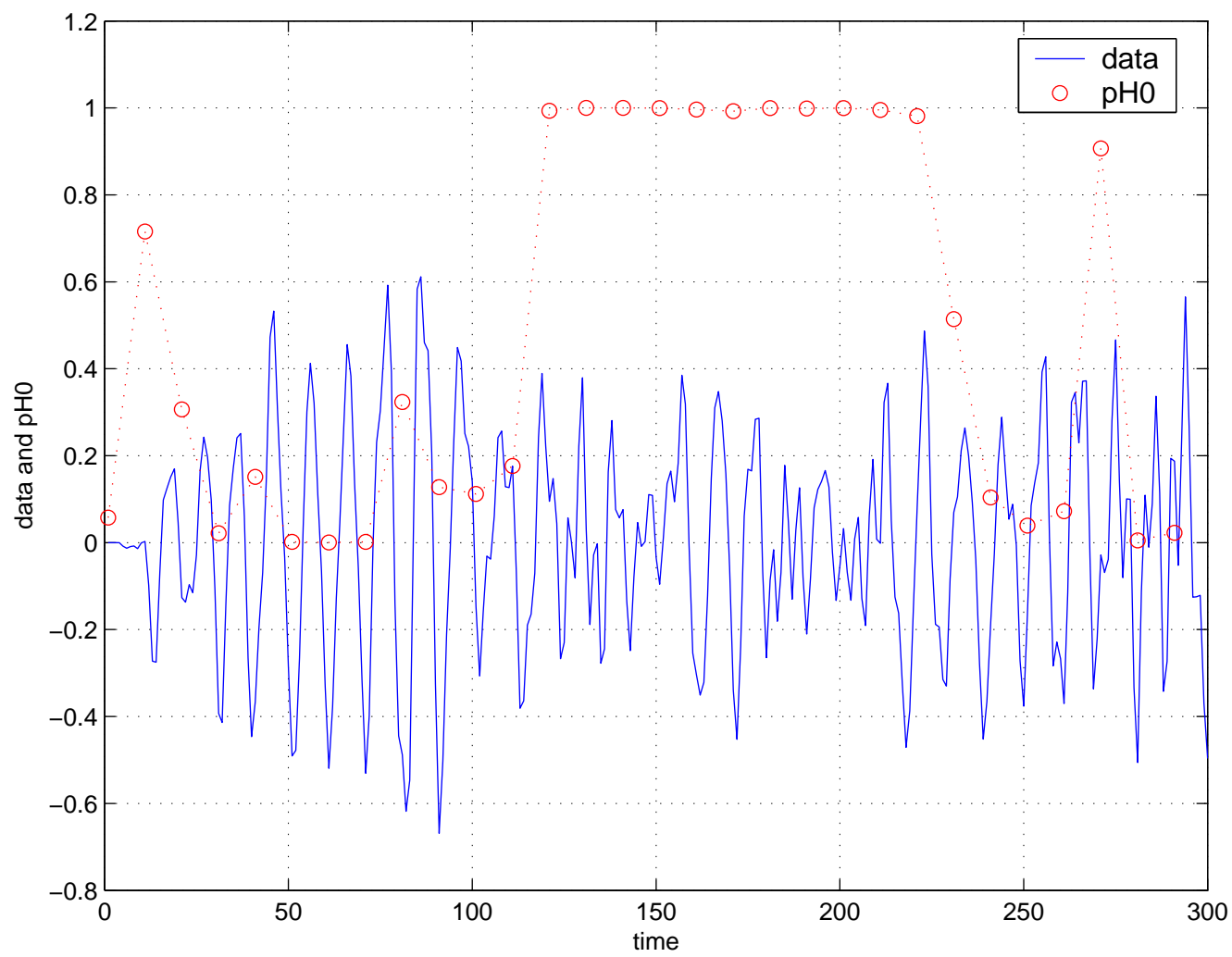


Figure 12: Model Validation by Cross-Validation of Learning Results