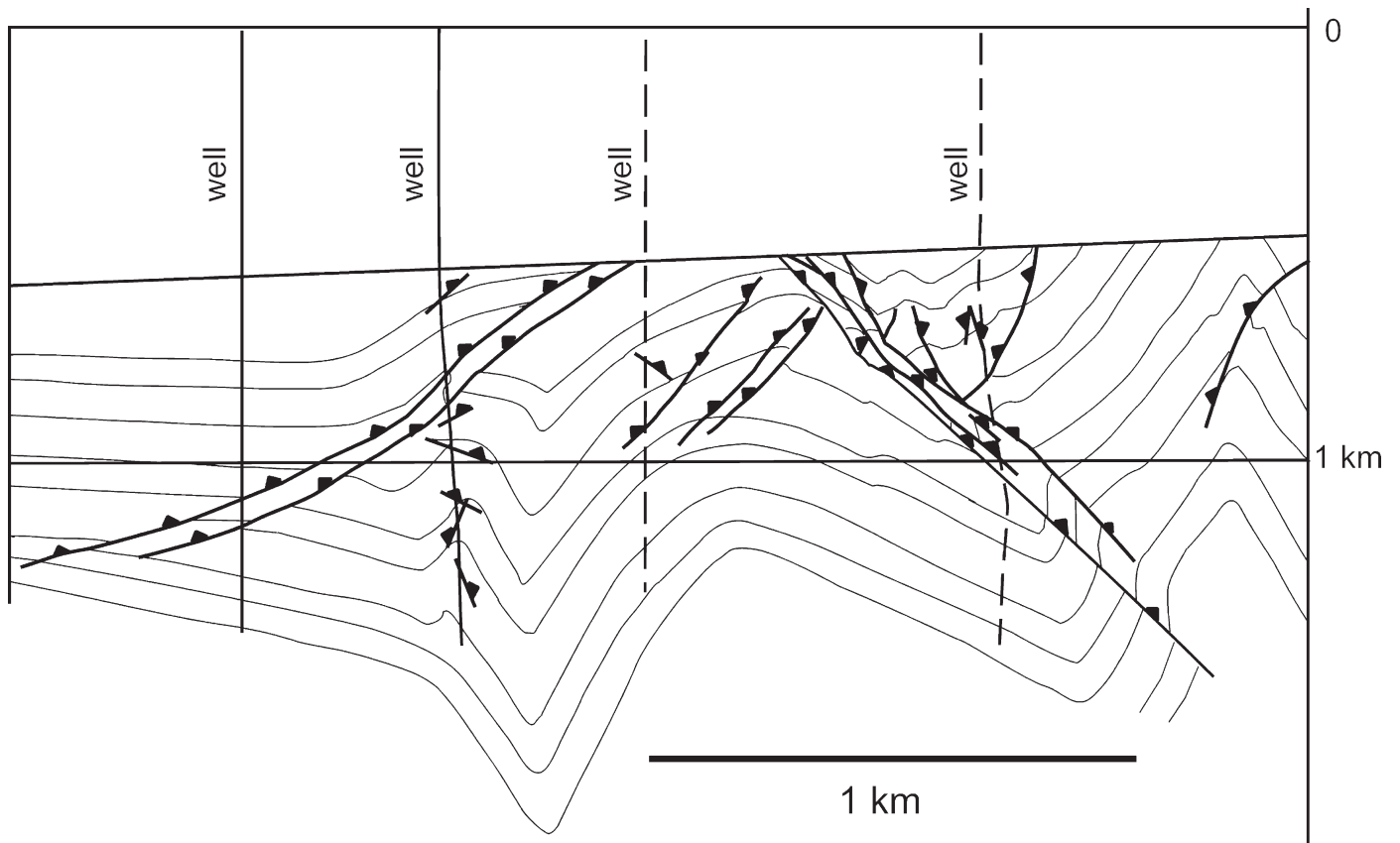


Restore the cross section in Fig. 11.71 by flexural slip. First it is necessary to correlate units across the faults. Discuss the effect of the choice of pin line and loose line on the result. Could the interpretation be questioned or improved? Is the cross section valid?



**Fig. 11.71.** Cross section of a portion of the Ruhr coal district, Germany. *Triangles* are located on the hangingwalls of the thrust faults. (After Drozdewski 1983)