

Restore the cross section in Fig. 11.75 by either rigid-block displacement or flexural slip. Discuss the reason for your choice of method. Predict the deep geometry of the Schell Creek master fault using oblique simple shear. Find the shear angle from the strain in the rollover.

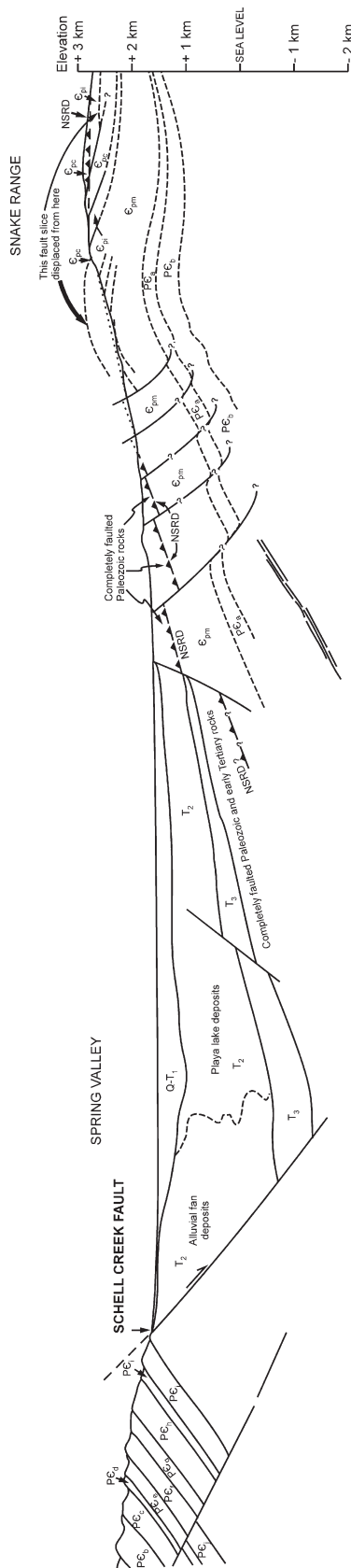


Fig. 11.75. Cross section of Schell Creek fault, U.S. Basin and Range province, Nevada from outcrop and seismic reflection profile. (After Gans et al. 1985). Groshong (1989) discusses the interpretation