

The Sequatchie anticline (Fig. 11.69, from the example in Fig. 6.23) is a compressional fold for which flexural-slip restoration is appropriate. The best choice of pin line and loose line would be where the structure returns to regional dip. As this does not occur on the cross section, a small uncertainty is introduced into the result. Vertical pin and loose lines or bed-normal pin and loose lines are both reasonable choices. Regardless of the choice, the restoration (Fig. 11.69A) is short of bed length in the deeper beds. It is likely that one or more small faults repeat bedding deep in the structure.

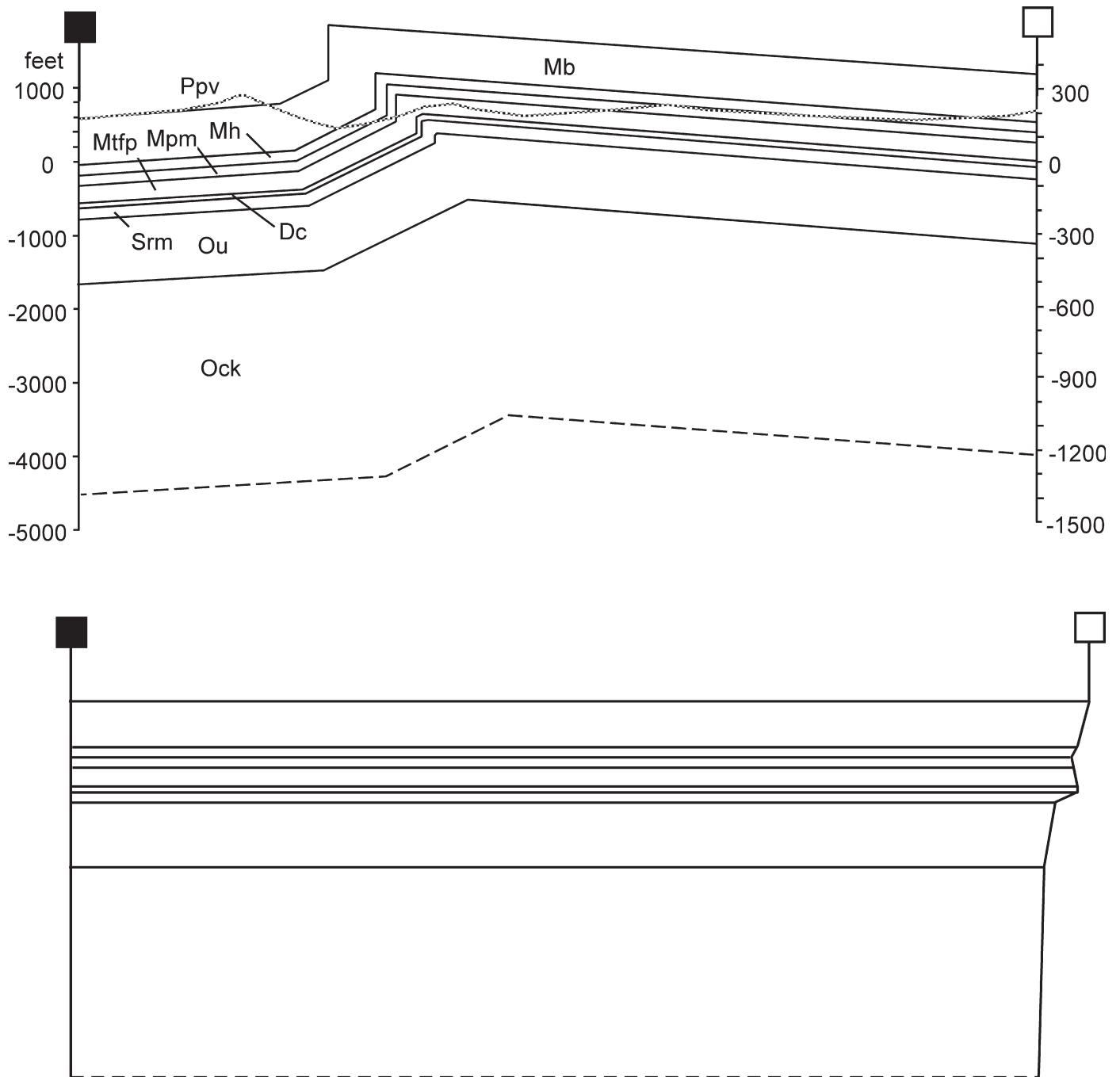


Fig. 11.69A. Flexural-slip restoration of the Sequatchie anticline