

Locate the position of the faults and the amounts of the fault cuts on the logs from the northern Gulf of Mexico (Fig. 7.40) based on the type log in Fig. 7.39. Example courtesy of Jack Pashin (Pashin et al. 2000).

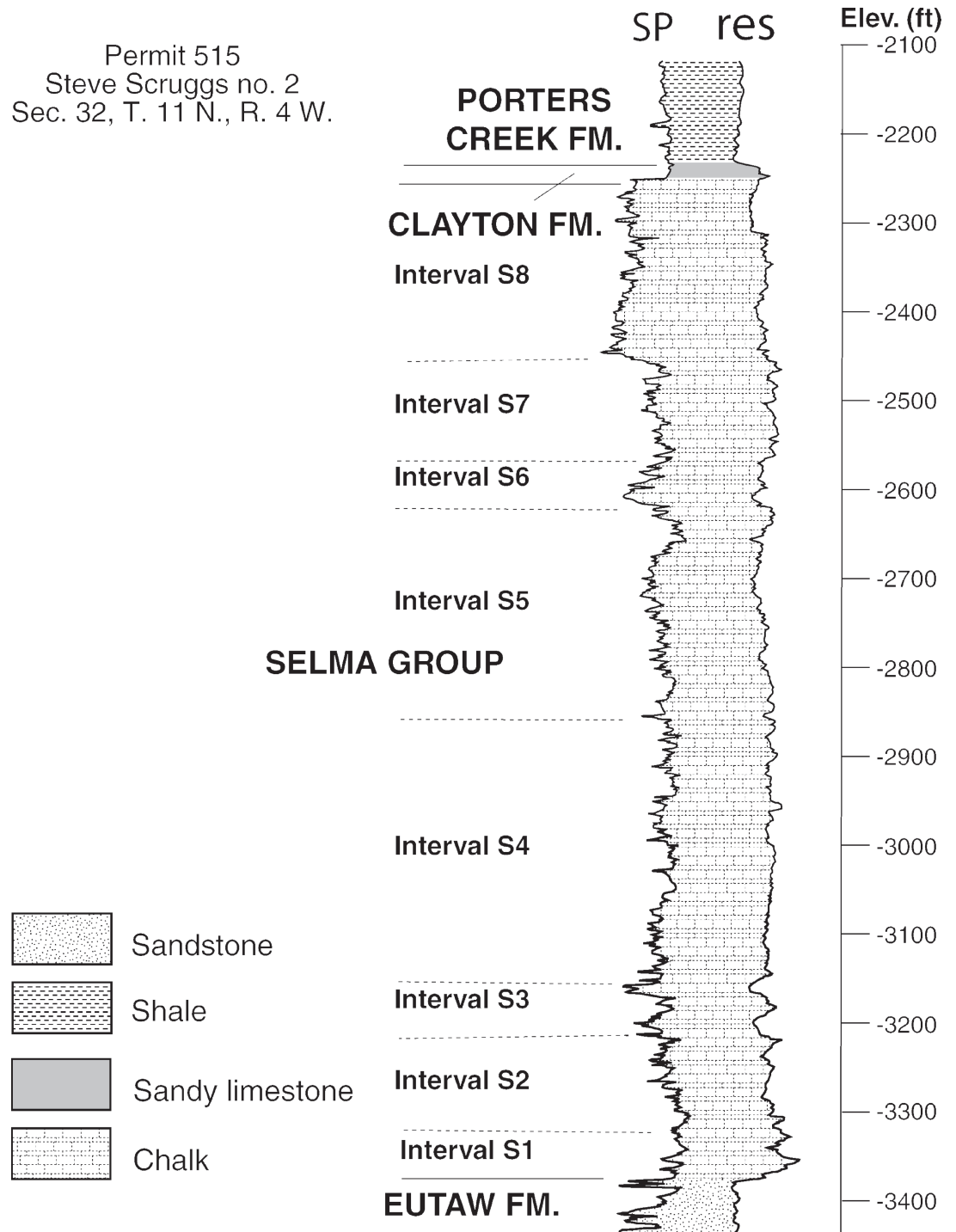


Fig. 7.39. Unfaulted type log of Selma Chalk, Gilberttown oil field

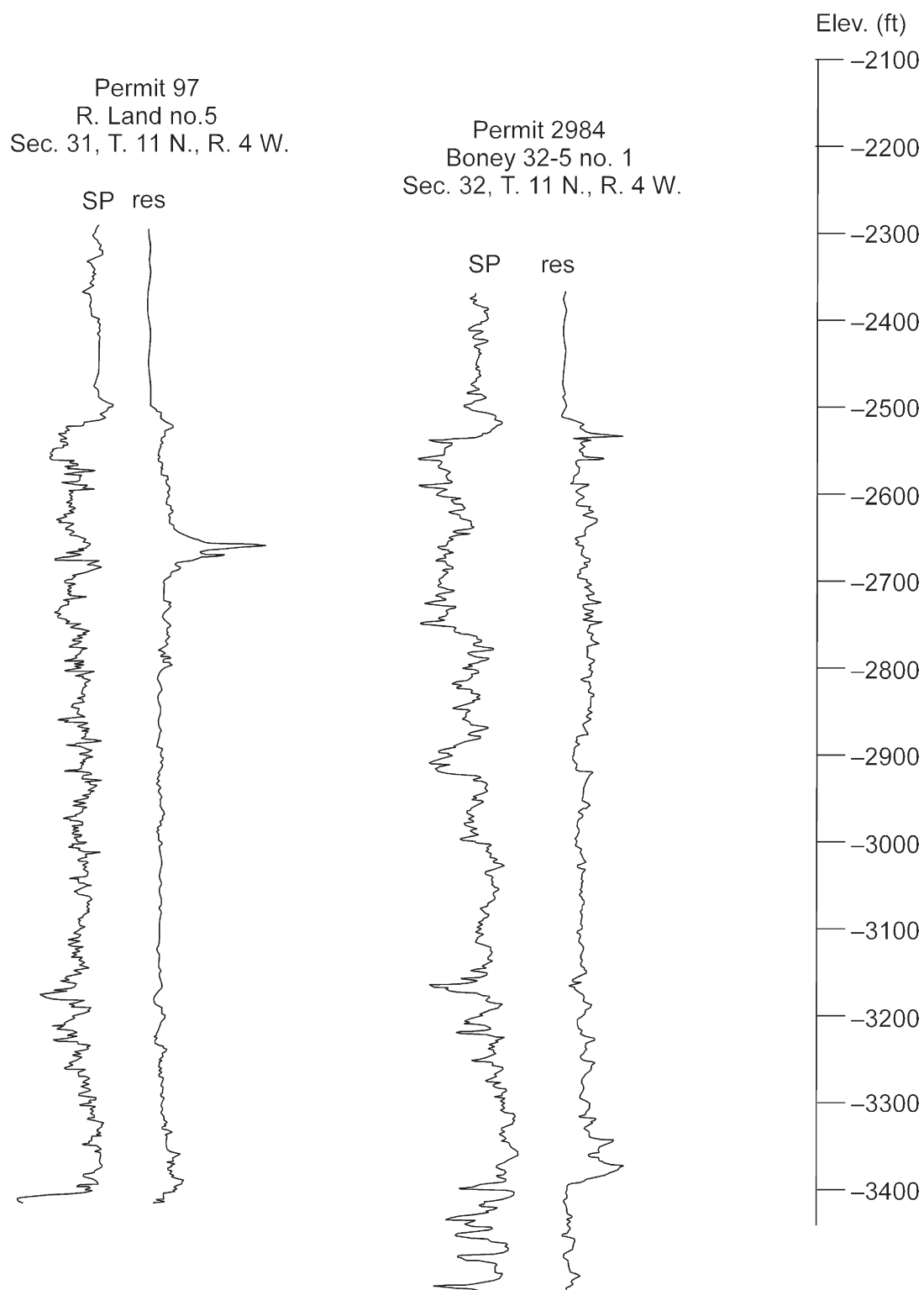


Fig. 7.40. Logs of two faulted wells in Selma Chalk, Gilbertown oil field