

Figure 8.55 is an isopach map. Locate the faults that explain the thickness changes. Indicate the upthrown and downthrown sides of each fault. Determine the throw on each fault. Make a structure contour map of the faults.

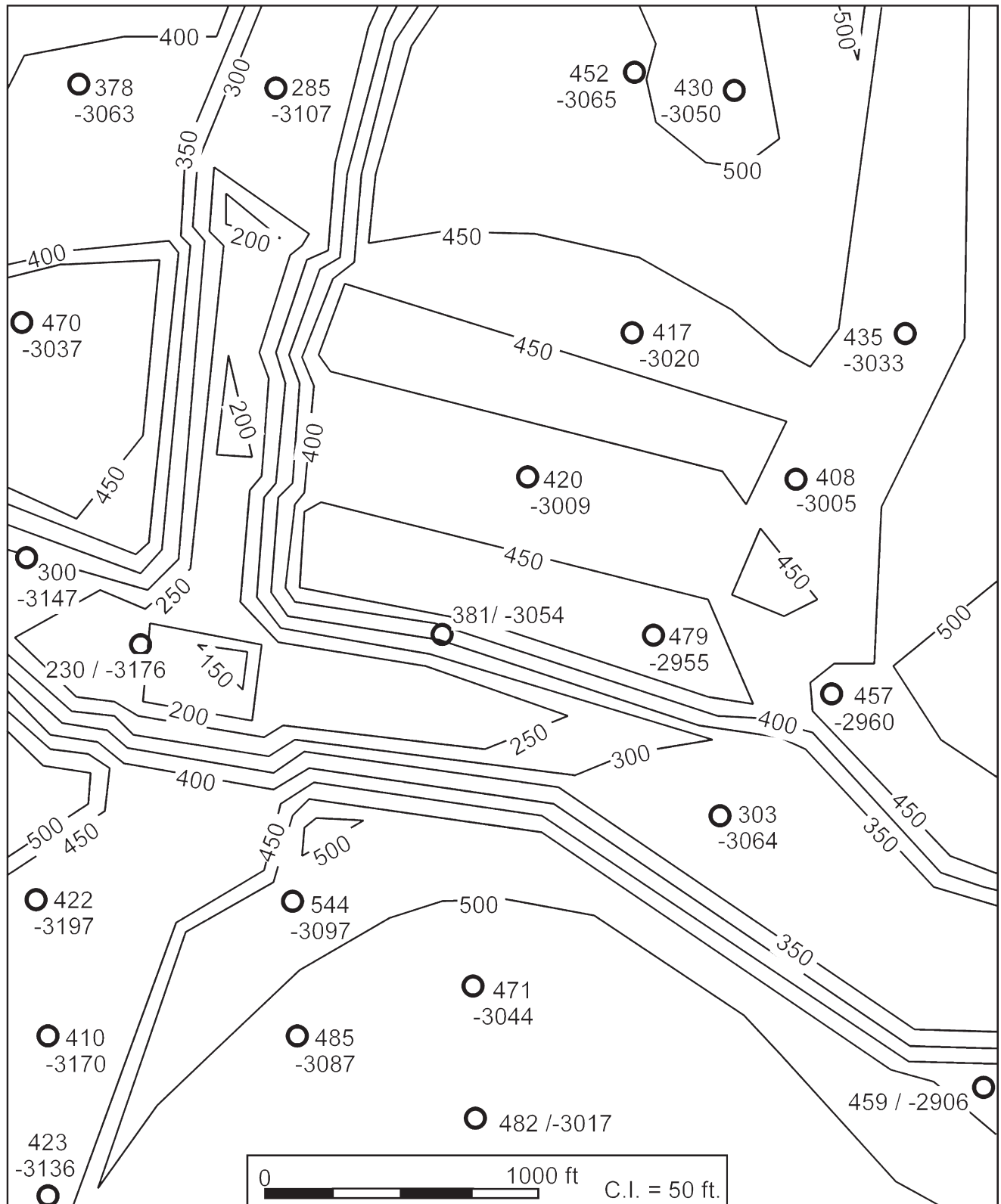


Fig. 8.55. Isopach map of the lower Taylor Formation above the Hawkins salt dome, Texas. Posted next to the wells (circles) are the thickness (upper or left-hand number) and the elevation of the formation top, in feet below sea level. (After Hintze 1971)