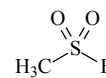
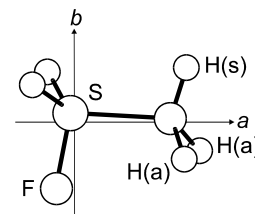


115
MW**CH₃FO₂S****Methanesulfonyl fluoride****C_s**

r_0	Å ^{a)}	θ_0	deg ^{a)}
C–S	1.756(5)	C–S–F	98.3(15)
S–F	1.573(5)	S–C–H(s) ^{b)}	106.6(20)
C–H(s) ^{b)}	1.086(10)	S–C–H(a) ^{b)}	108.9(20)
C–H(a) ^{b)}	1.085(10)	H(a)–C–H(a) ^{b)}	111.8(20)
S=O	1.416(5)	C–S=O	110.6(15)
		O=S=O	122.2(15)

r_{IE}	Å ^{a)}	θ_{IE}	deg ^{a)}
C–S	1.756(5)	C–S–F	98.6(15)
S–F	1.563(5)	S–C–H(s) ^{b)}	106.4(20)
C–H(s) ^{b)}	1.086(10)	S–C–H(a) ^{b)}	108.6(20)
C–H(a) ^{b)}	1.085(10)	H(a)–C–H(a) ^{b)}	111.8(20)
S=O	1.417(5)	C–S=O	110.4(15)
		O=S=O	121.8(15)

^{a)} Uncertainties were not estimated in the original paper.^{b)} H(s) and H(a) denote the methyl hydrogen atoms in and out of the molecular plane, respectively.Merke, I., Heineking, N., Berdan, M., Hartwig, H., Demaison, J.: J. Mol. Struct. **517-518** (2000) 351.[II/25B\(3, 277\)](#)