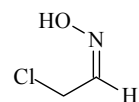


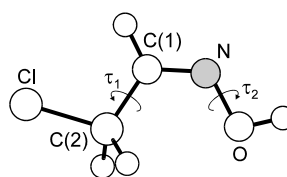
261
MW**C₂H₄CINO****(Z)-Chloroacetaldehyde oxime****C_s(*ap*)**

r_0	Å
O–H	0.956 ^{a)}
C(1)–H	1.088 ^{a)}
C(2)–H	1.100 ^{a)}
C–Cl	1.789(5)
C–C	1.504(5)
C=N	1.282(5)
N–O	1.408(5)

θ_0	deg
H–O–N	102.4 ^{a)}
H–C(1)=N	115.3 ^{a)}
H–C(2)–C(1)	112.3 ^{a)}
H–C(2)–H	109.4 ^{a)}
C–C=N	124.0(5)
C=N–O	110.1(5)
Cl–C–C	109.4(5)
τ_1 ^{b)}	180
τ_2 ^{b)}	180



Atom	$ a_s $ [Å]	$ b_s $ [Å]
Cl	2.005	0.182
H ^{c)}	3.262	0.578

^{a)} Assumed.^{b)} See figure for the definition.^{c)} Hydroxyl hydrogen.Sakaizumi, T., Takeda, S., Ohashi, O., Iijima, K.: J. Mol. Spectrosc. **179** (1996) 324.[II/25B\(3, 730\)](#)