

Al – Ce (Aluminum – Cerium)

Phase diagram

The phase diagram drawn by [Landolt-Börnstein] on the basis of phase equilibria reported by Gschneidner et al. [88 Gsc] has been redetermined by Saccone et al. [96 Sac]. On the now existing basis Okamoto [98 Oka] has drawn a phase diagram which is given in Fig. 1.

Figure

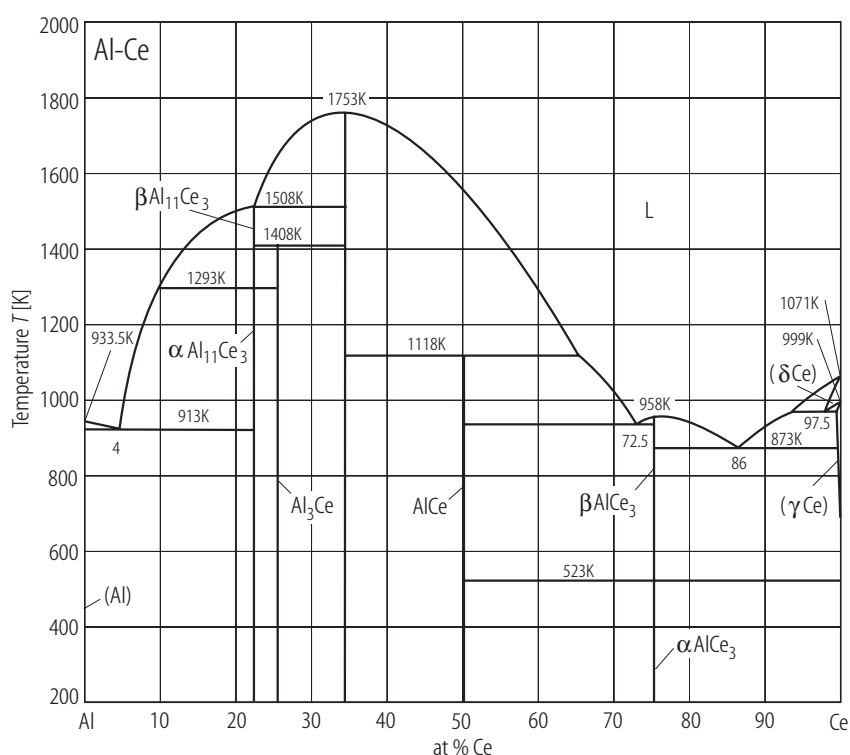


Fig. 1. Al–Ce. Phase diagram [98 Oka].

References

- [88 Gsc] Gschneidner, K.A. Jr., Calderwood, F.W.: Bull. Alloy Phase Diagrams **9** (1988) 669
- [96 Sac] Saccone, A., Cardinale, A.M., Delfino, S., Ferro, R.: Z. Metallkde. **87** (1996) 82
- [98 Oka] Okamoto, H.: J. Phase Equilibria **19** (1998) 396
- [Landolt-Börnstein] New Series, Group IV, Vol. 5, Subvolume a to j, Predel, B., Madelung, O. (ed.), Springer-Verlag (1991) to (1998)