

Al – Pb (Aluminum – Lead)

Phase diagram

Recent calculation of the phase diagram has been performed by Yu et al. [96 Yu]. Experimentally determined phase equilibria, using the isopiestic method, have been published by Sommer [96 Som]. Results of both sources are presented in Fig. 1.

Figure

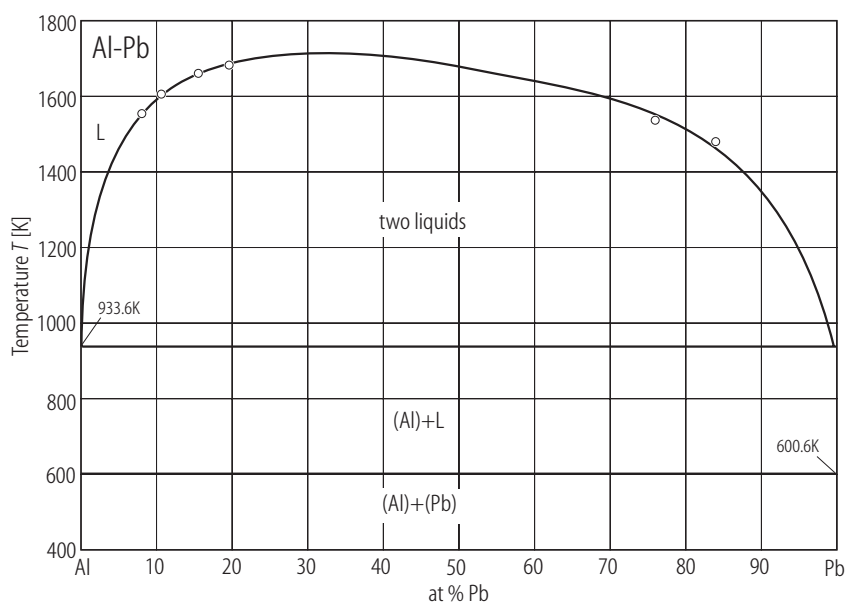


Fig. 1. Al–Pb. Phase diagram calculated [96 Yu] and experimentally corroborated [96 Som].

References

- [96 Som] Sommer, F.: Z. Metallkde. **87** (1996) 865
[96 Yu] Yu, S.K., Sommer, F., Predel, B.: Z. Metallkde. **81** (1996) 574