

Al – Ru (Aluminum – Ruthenium)

Phase diagram

Boniface et al. [96 Bon], using several experimental methods, have investigated the Al-end of the Al-Ru phase diagram. They found that there is a peritectic cascade forming the intermediate phases Al_3Ru_2 , Al_2Ru , $\text{Al}_{13}\text{Ru}_4$ and Al_6Ru . At least the alloy solidifies as an eutectic involving the solid phases Al_6Ru and solid solutions Al (Ru). The phase Al_{12}Ru mentioned by Obrowski [63 Obr] could not be found.

Figure

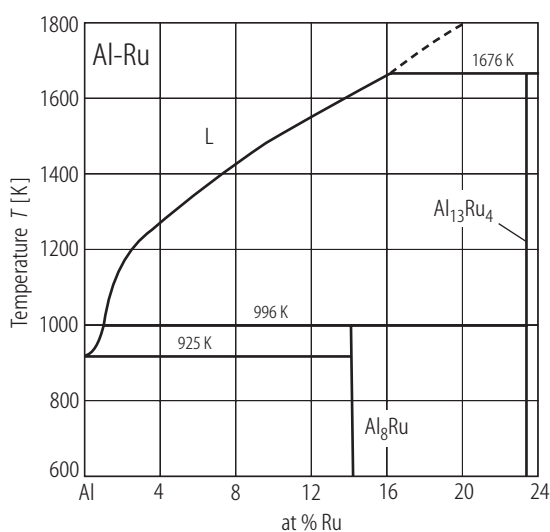


Fig. 1. Al–Ru. Al-rich part of the phase diagram [96 Bon].

References

- [63 Obr] Obrowski, W.: Metallwissenschaft und Technik (Berlin) **17** (1963) 108
 [96 Bon] Boniface, T.D., Cornish, L.A.: J. Alloys and Comp. **233** (1996) 241