

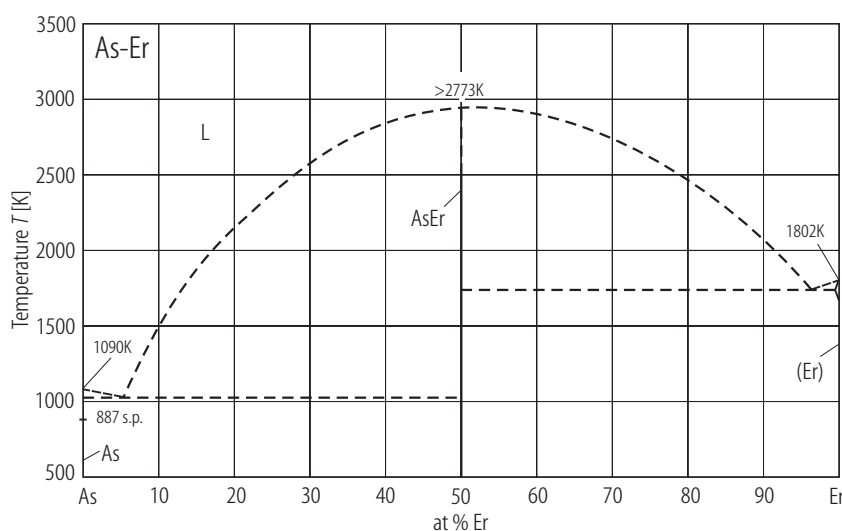
## As – Er (Arsenic – Erbium)

### Phase diagram

Mainly on the basis of the knowledge of only one intermediate phase AsEr, [Moffatt] has constructed a hypothetical phase diagram, which has been reproduced by [Massalski]. From there information has been obtained to draw Fig. 1.

Gschneidner et al. [86 Gsc] stated that the melting point of As-Er is higher than 2773 K.

### Figure



**Fig. 1. As–Er.** Hypothetical phase diagram taken from [Massalski].

### References

- [86 Gsc] Gschneidner, K.A., Jr., Calderwood F.W.: Bull. Alloy Phase Diagrams **7** (1986) 274
- [Massalski] Massalski, T.B., (ed.): “Binary Alloy Phase Diagrams”, Second Edition, The Materials Information Society, ASM International, Materials Park, Ohio (1992)
- [Moffatt] Moffatt, W.G., (ed.): “Handbook of Binary Phase Diagrams”, Business Growth Services, General Electric Co., Schenectady, New York (1976)