

## As – Lu (Arsenic – Lutetium)

### Phase diagram

On the basis of some considerations [Moffatt] has drawn a hypothetical phase diagram, which is reproduced in Fig. 1 (see also [Massalski]).

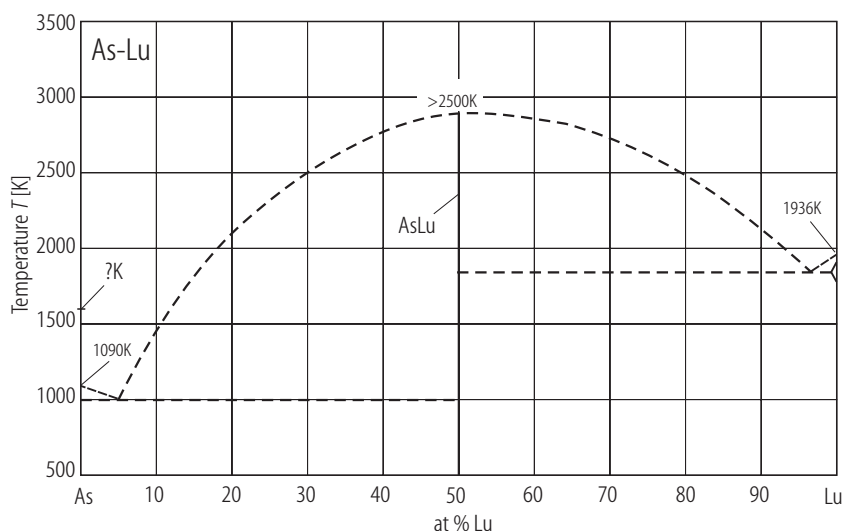
### Crystal structure

The compound AsLu has been investigated by X-ray diffractometry. Its structure is cubic (NaCl – type) with the lattice parameter of

$$a = 0.5769 \text{ nm}$$

(Bruzzone [61 Bru]).

### Figure



**Fig. 1. As–Lu.** Hypothetical phase diagram constructed by [Moffatt].

### References

- [61 Bru] Bruzzone, G.: *Atti Accad. Naz. Lincei. Cl. Sci. Fis. Mat. Nat. Rend.* **30** (1961) 208
- [Massalski] Massalski, T.B., (ed.): “Binary Alloy Phase Diagrams”, Second Edition, The Materials Information Society, ASM International, Materials Park, Ohio (1992)
- [Moffatt] Moffatt, W.G., (ed.): “Handbook of Binary Phase Diagrams”, Business Growth Services, General Electric Co., Schenectady, New York (1976)