

As – Pb (Arsenic – Lead)

Phase diagram

By thermodynamic modelling Gokcen [90 Gok] has constructed an assessed phase diagram, which is more or less identical with that given in [Massalski] (see Fig. 1).

The Pb-rich part of the system is given in Fig. 2 in an enlarged version taken from Gokcen [90 Gok]. A short review of this system has been given by the last mentioned author. From there information has been obtained to draw Fig. 2.

Figures

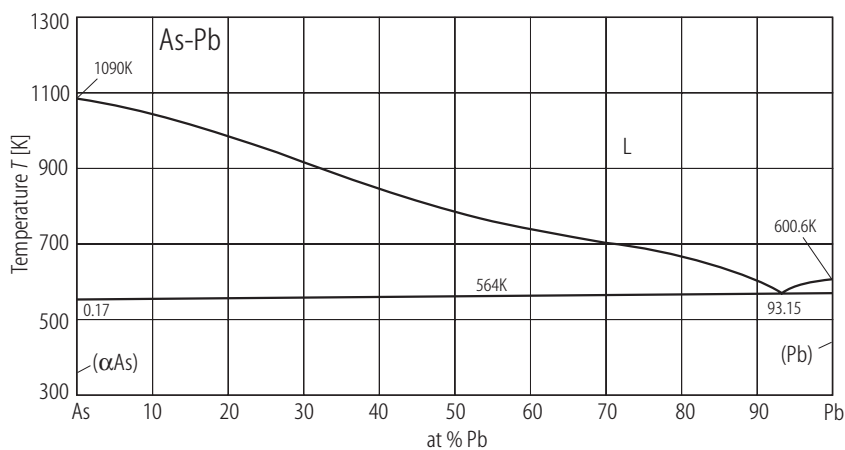


Fig. 1. As–Pb. Phase diagram As-Pb taken from [90 Gok].

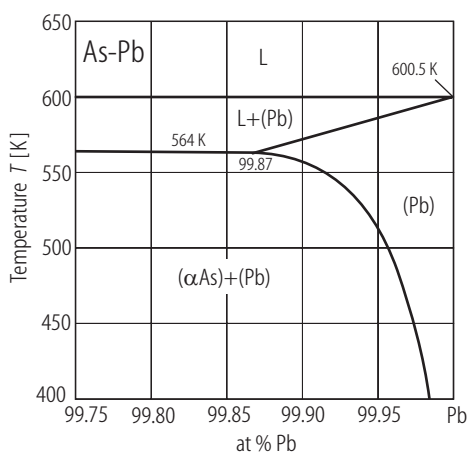


Fig. 2. As–Pb. Pb-rich part of the As-Pb system [90 Gok].

References

- [90 Gok] Gokcen, N.A.: Bull. Alloy Phase Diagrams **11** (1990) 120
 [Massalski] Massalski, T.B., (ed.): “Binary Alloy Phase Diagrams”, Second Edition, The Materials Information Society, ASM International, Materials Park, Ohio (1992)