

At – Mo (Astatine – Molybdenum)

Phase diagram

There exists one intermediate phase in this system: At_2Mo . The structure of it has not been investigated [Massalski].

In [Molybdenum] there is mentioned that the phase diagram At-Mo should be similar to that of Mo-I. This scarce information has been the basis to propose a partial phase diagram by [Moffatt]. This hypothetical diagram was redrawn by [Massalski] and, also, has been taken to construct Fig. 1.

Figure

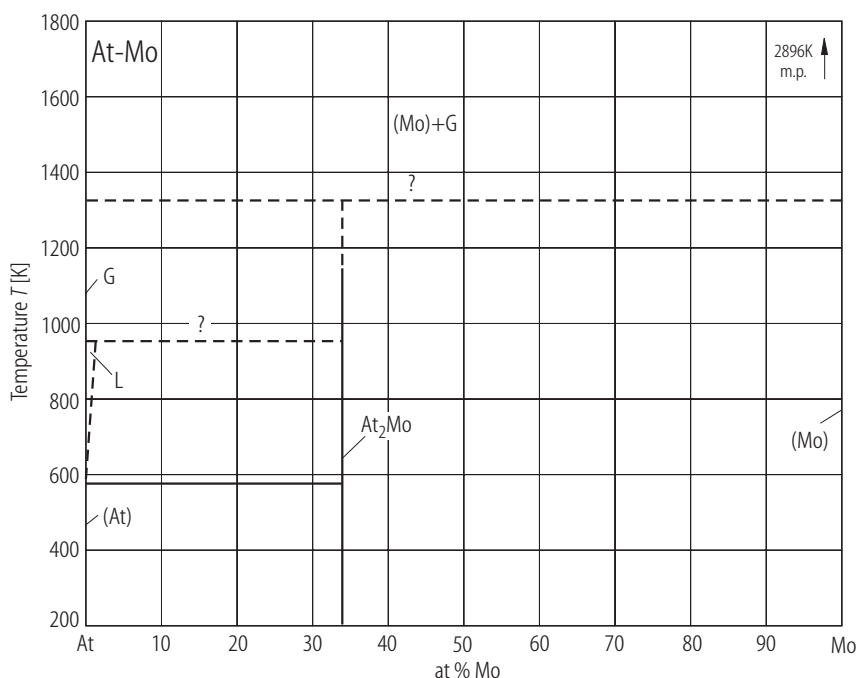


Fig. 1. At–Mo. Partial phase diagram of the system At-Mo [Massalski].

References

- | | |
|--------------|--|
| [Massalski] | Massalski, T.B., (ed.): “Binary Alloy Phase Diagrams”, Second Edition, The Materials Information Society, ASM International, Materials Park, Ohio (1992) |
| [Moffatt] | Moffatt, W.G., (ed.): “Handbook of Binary Phase Diagrams”, Business Growth Services, General Electric Co., Schenectady, New York (1976) |
| [Molybdenum] | Brewer, L.: “Molybdenum, Physico-Chemical Properties of Its Compounds and Alloys”, Kubaschewski, O. (ed.), Atomic Energy Review, Special Issue, No. 7, International Atomic Energy Agency, Vienna (1980) |