

## Au – Be (Gold – Beryllium)

### Phase diagram

Based on some experimental results present in the literature and applying a subregular model, Okamoto et al. [92 Oka] have constructed the phase diagram of the Au-Be system. This diagram was redrawn in Fig. 1.

### Figure

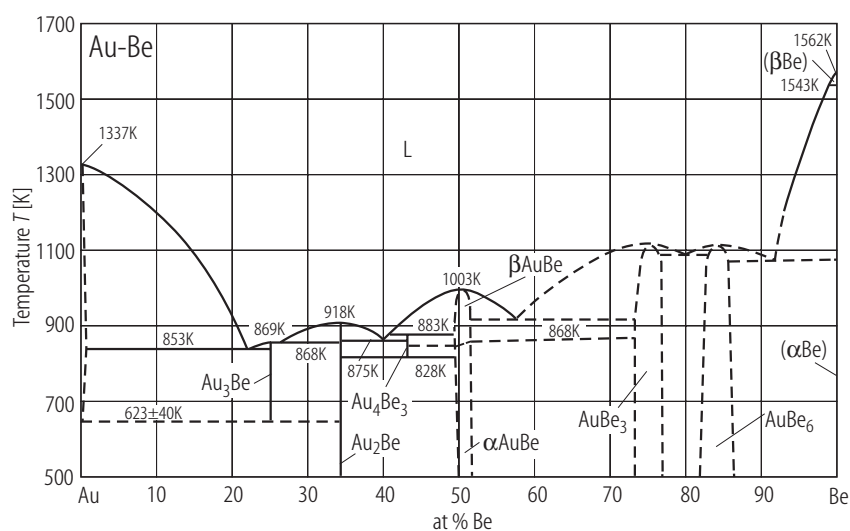


Fig. 1. Au–Be. Phase diagram proposed by [92 Oka].

### References

- [92 Oka] Okamoto, H., Massalski, T.B., in: [Massalski]  
 [Massalski] Massalski, T.B., (ed.): “Binary Alloy Phase Diagrams” Second Edition, The Materials Information Society, ASM International, Materials Park, Ohio (1992)