

Ag – Bi (Silver – Bismuth)

Phase diagram

The solvus at the Ag-rich side is of retrograde shape. It is given in Fig. 1 (taken from Karakaya et al. [93 Kar]).

Thermodynamics

Recently, Hassam et al. [94 Has] have determined by high-temperature calorimetry the enthalpies of mixing of liquid alloys at 878 K. The results are given in Fig. 1. They deviate not seriously from those published by Sommer et al. [80 Som], determined at temperatures between 800 K and 1180 K.

Thermodynamic activities at 1000 K for liquid alloys have been calculated by Karakaya et al. [93 Kar].

Figures

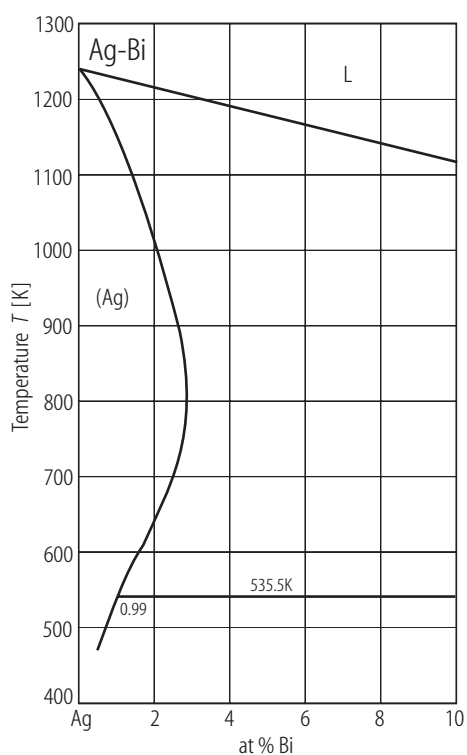


Fig. 1. Ag-Bi. Bi-rich side of phase diagram Ag-Bi [93 Kar].

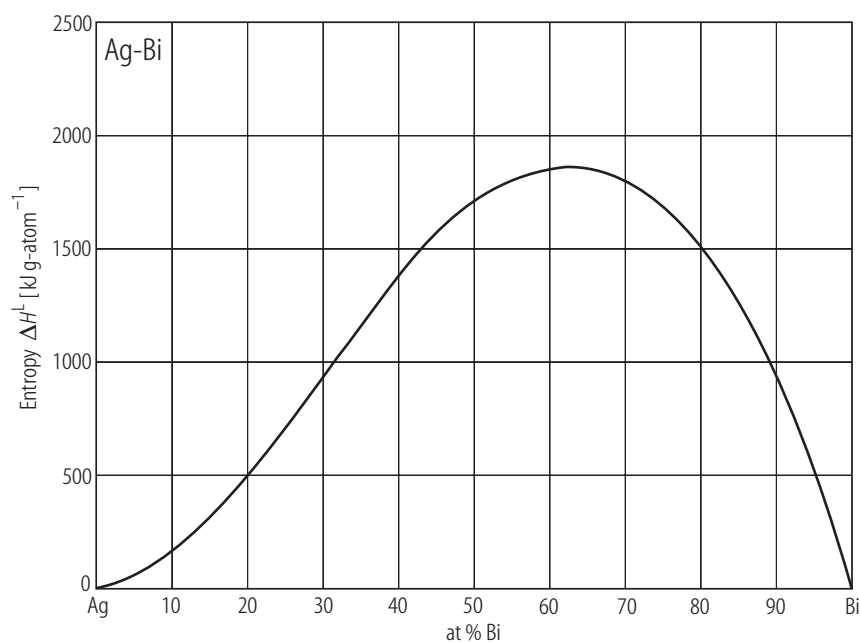


Fig. 2. Ag-Bi. Enthalpies of mixing of liquid alloys [94 Has].

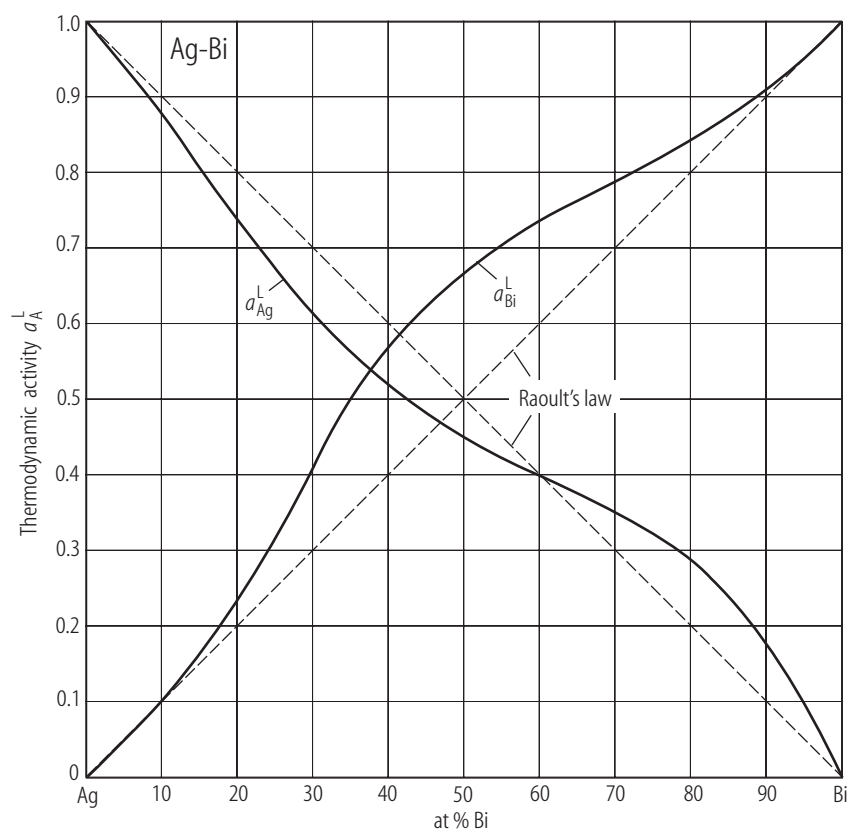


Fig. 3. Ag-Bi. Thermodynamic activities of liquid alloys at 1000 K [93 Kar].

References

- [80 Som] Sommer, F., Eschenweck, D., Predel, B.: Z. Metallkde. **71** (1980) 249
[93 Kar] Karakaya, I., Thompson, W.T.: J. Phase Equilibria **14** (1993) 525
[94 Has] Hassam, S., Gambino, M., Bros, J.P.: Z. Metallkde. **85** (1994) 460