

Ag – Ru (Silver – Ruthenium)

Phase diagram

This system is of monotectic type. No stable intermediate phase is existing in the Ag-Ru system [Moffatt] (see also [Massalski]). On the basis of some information from Rudnitskii [59 Rud] [Moffatt] has constructed a hypothetical phase diagram shown in Fig. 1. Rudnitskii [59 Rud] has estimated the eutectic point at 3.1 at% Ru and 1193 K.

Figure

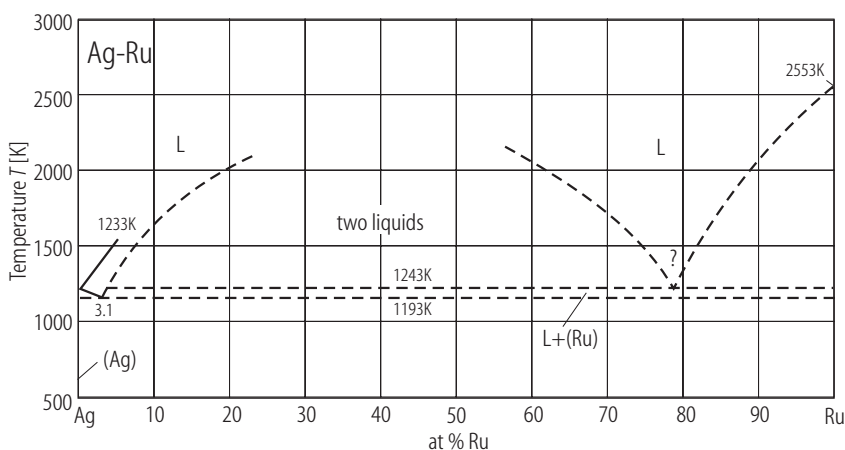


Fig. 1. Ag-Ru. Hypothetical phase diagram estimated by [Moffatt]; see also Karakaya et al. in: [Massalski].

References

- [59 Rud] Rudnitskii, A.A., Novikova, O.A.: Russ. J. Inorg. Chem. **4** (1959) 719
- [Massalski] Massalski, T.B., (ed.): "Binary Alloy Phase Diagrams", Second Edition, The Materials Information Society, ASM International, Materials Park, Ohio (1992)
- [Moffatt] Moffatt, W.G., (ed.): "Handbook of Binary Phase Diagrams", Business Growth Services, General Electric Co., Schenectady, New York (1976)