

Al – Ta (Aluminum – Tantalum)

Phase diagram

A comprehensive modelling of this system has been done by Du et al. [96 Du] on a basis of all relevant thermodynamic data available in the literature. This phase diagram calculated by [96 Du] is reproduced in Fig. 1.

By rod milling (starting with a mixture of Al- and Ta-powder) El-Escandarany et al. [90 El-E] succeeded in preparing amorphous alloys of the stoichiometry $\text{Al}_{30}\text{Ta}_{70}$.

Figure

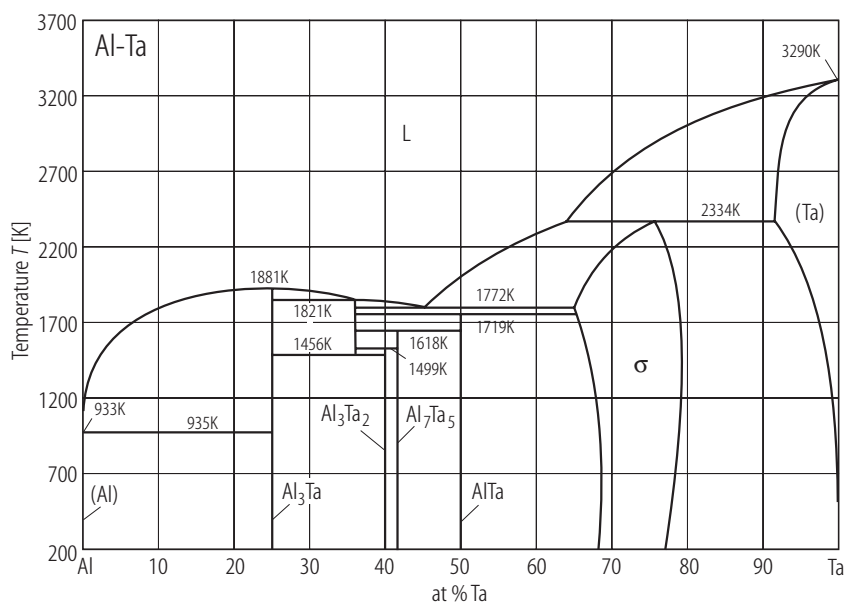


Fig. 1. Al-Ta. Calculated phase diagram [96 Du].

References

- [90 El-E] El-Escandarany, M.S., Aoki, K., Suzuki, K.: J. Less-Common Met. **167** (1990) 113
- [96 Du] Du, Y., Schmidt-Fetzer, R.: J. Phase Equilibria **17** (1996) 311