

Am – Pd (Americium – Palladium)

Phase diagram

The phase diagram has been determined by Radchenko et al. [90 Rad]. The authors used various experimental techniques (X-ray diffractography, differential thermal analysis, metallographic methods). The results have been reproduced by Okamoto [99 Oka]. From there information has been obtained to draw Fig. 1.

Crystal structure

Erdman et al. [71 Erd] have determined the structure of AmPd_3 . It is cubic (AuCu_3 -type) with lattice constant

$$a = 0.4138 \text{ nm (see also [73 Erd])}.$$

Figure

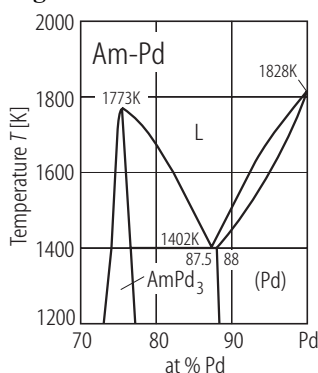


Fig. 1. Am–Pd. Partial phase diagram of the system Am-Pd [99 Oka].

References

- [71 Erd] Erdman, B., Keller, C.: Inorg. and Nucl. Chem. Letters **7** (1971) 675
- [73 Erd] Erdman, B., Keller, C.: J. Solid State Chem. **7** (1993) 40
- [90 Rad] Radchenko, V.M., Seleznev, A.G., Shushakov, V.D., Droznik, R.R., Ryabnin, M.A., Lebedeva, L.S., Yashilyev, V.Ya.: J. Radioanal. Nucl. Chem., Articles **143** (1990) 261
- [99 Oka] Okamoto, H.: J. Phase Equilibria **20** (1999) 348