

## Au – Pm (Gold – Prometium)

### Phase diagram

The phase diagram has been calculated by Okamoto et al. [92 Oka]. For this treatment some assumptions have been made:

The liquid obeys the model of subregular solutions. There is no mutual solution of the components in the solid state.  $\Delta C_p = 0$  for all phases.

Lattice stability parameters for the pure elements have been derived from their enthalpy of formations [83 Cha].

The resulting phase diagram is given in Fig. 1.

### Figure

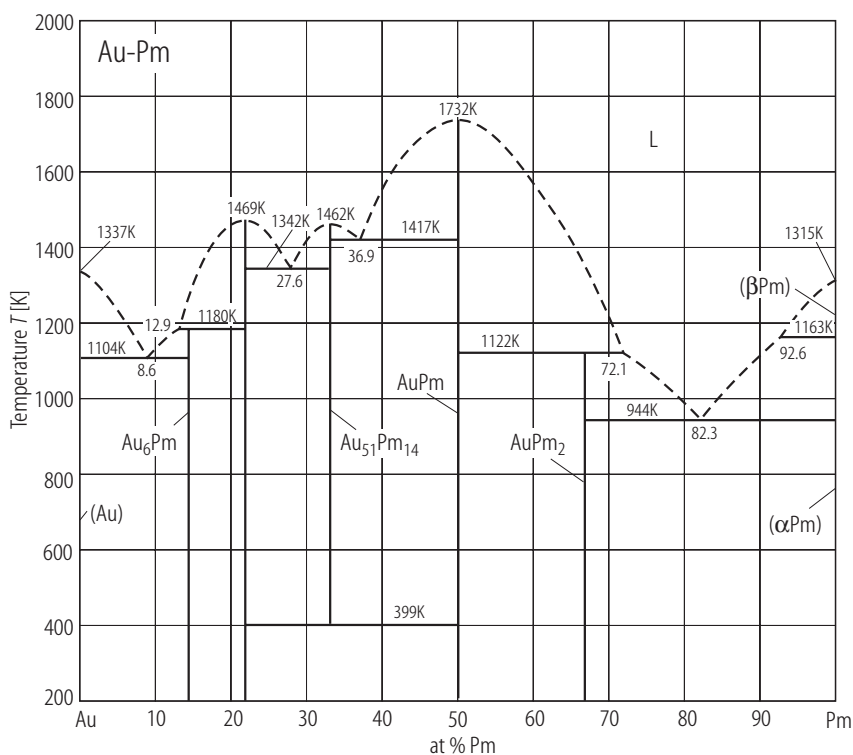


Fig. 1. Au–Pm. Phase diagram calculated by Okamoto et al. [92 Oka].

### References

- [83 Cha] Chace, M.W.: Bull. Alloy Phase Diagrams **4** (1983) 124
- [92 Oka] Okamoto, H., Massalski, T.B., in: [Massalski]
- [Massalski] Massalski, T.B., (ed.): "Binary Alloy Phase Diagrams" Second Edition, The Materials Information Society, ASM International, Materials Park, Ohio (1992)