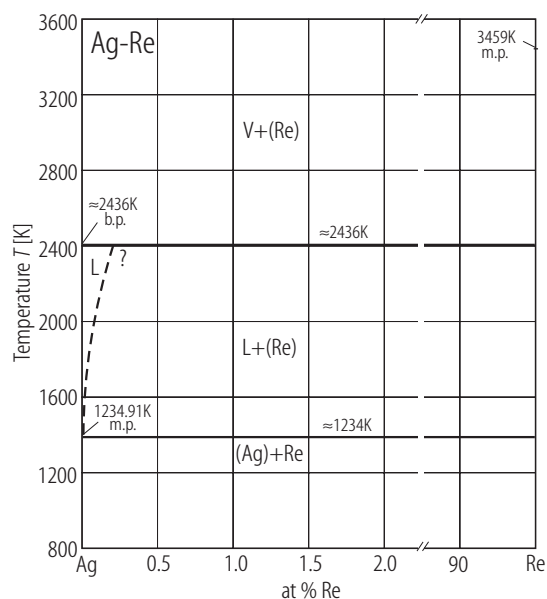


## Ag – Re (Silver – Rhenium)

### Phase diagram

As Karakaya et al. [88 Kar] stated, the phase diagram is of monotectic type. The diagram proposed was redrawn by [Moffatt] and by [Massalski]. From there information was taken to draw Fig. 1.

### Figure



**Fig. 1. Ag-Re.** Phase diagram [Moffatt].

### References

- [88 Kar] Karakaya, I., Thompson, W.T.: Bull. Alloy Phase Diagrams **9** (1988) 243
- [Massalski] Massalski, T.B., (ed.): "Binary Alloy Phase Diagrams", Second Edition, The Materials Information Society, ASM International, Materials Park, Ohio (1992)
- [Moffatt] Moffatt, W.G., (ed.): "Handbook of Binary Phase Diagrams", Business Growth Services, General Electric Co., Schenectady, New York (1976)