

Ag – Sb (Silver – Antimony)

Phase diagram

Feschotte et al. [92 Fes] have found experimentally that there is no transformation of the ε - phase at about 720 K. Furtheron, these authors have confirmed the range of existence of the ζ – phase as it was assumed up to now. The phase equilibria in the Ag-rich part of the phase diagram are shown in Fig. 1.

Using splat cooled samples Yuantao et al. [92 Yua] have determined the lattice parameters of fcc (Ag) solid solutions. The results are given in Fig. 2.

Figures

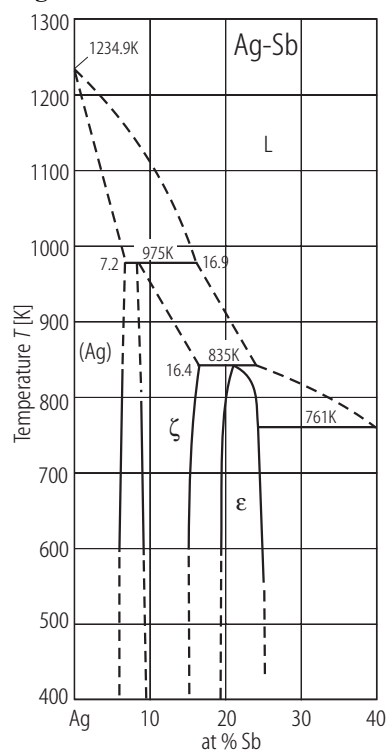


Fig. 1. Ag-Sb. The Ag-rich part of the phase diagram [92 Fes].

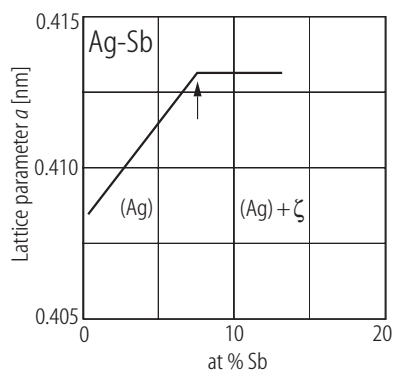


Fig. 2. Ag-Sb. Lattice parameters of fcc (Ag) solid solutions obtained by splat cooling [92 Yua].

References

- [92 Fes] Feschotte, P., Monachon, F., Darussel, Ph.: J. Alloys and Comp. **186** (1992) L17
[92 Yua] Yuantao, N., Xinming, Z.: J. Alloys and Comp. **182** (1992) 131