

Al – X binary systems

Al – Au (Aluminum – Gold)

Phase diagram

The recent equilibrium data were discussed and optimized by Okamoto [91 Oka]. The results of this assessment are given in Fig. 1 (Au-rich alloys). The solidus has been investigated by [86 Gun] (in NMR experiments) and Charquet et al. [67 Cha]. The results of both investigations are consistent with each other above 800 K, but deviate from earlier results [Landolt-Börnstein]. At least, on the basis of crystallographic investigations by Range et al. [89 Ran], there was shown that the real stoichiometry of the compound existing in this range is Al_3Au_8 .

Figure

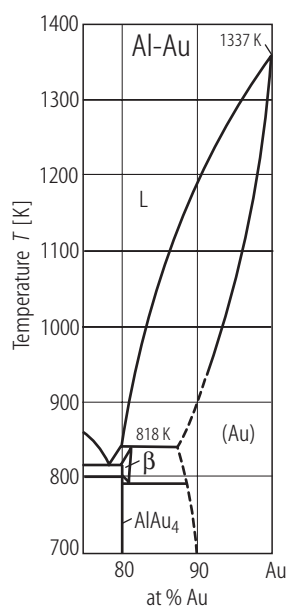


Fig. 1. Al–Au. Partial phase diagram Al-Au taken from [91 Oka].

References

- [67 Cha] Charquet, D., Desai, P., Bonnier, E.: *Compt. Rend* **264** (1967) 1637
- [86 Gun] Gunther, B., Kanert, O., Tietz, W.: *J. Phys. F, Met. Phys.* **16** (1986) L27
- [89 Ran] Range, K.J., Buchler, H.: *J. Less-Common Met.* **14** (1989) 251
- [91 Oka] Okamoto, H.: *J. Phase Equilibria* **12** (1991) 114
- [Landolt-Börnstein] New Series, Group IV, Vol. 5, Subvolume a to j, B. Predel, O. Madelung, (ed.), Springer-Verlag (1991) to (1998)