

As – X binary systems

As – B (Arsenic – Boron)

Phase diagram

A partial phase diagram has been constructed by Eliseev et al. [64 Eli] and redrawn by [Massalski]. From the latter source information has been obtained to draw Fig. 1.

Figure

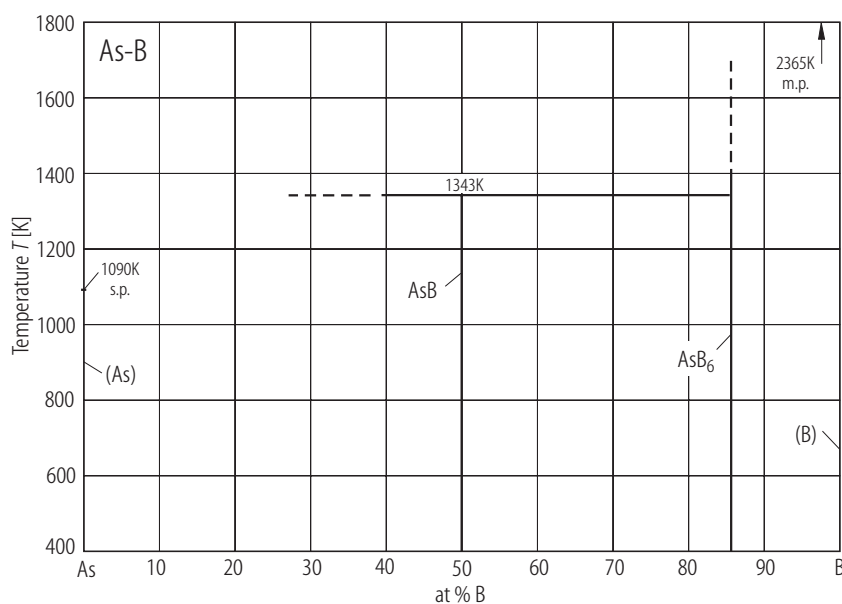


Fig. 1. As–B. Partial phase diagram [64 Eli], [Massalski].

References

- [64 Eli] Eliseev, A.A., Babitsyna, A.A., Medvedeva, Z.S.: Zh. Neorg. Khim. **9** (1964) 1158
 [Massalski] Massalski, T.B., (ed.): “Binary Alloy Phase Diagrams”, Second Edition, The Materials Information Society, ASM International, Materials Park, Ohio (1992)