

## As – Sm (Arsenic – Samarium)

### Phase diagram

The phase diagram has been constructed by Rustamov et al. [87 Rus]. [Massalski] has redrawn it and from there information has been obtained to draw Fig. 1.

### Figure

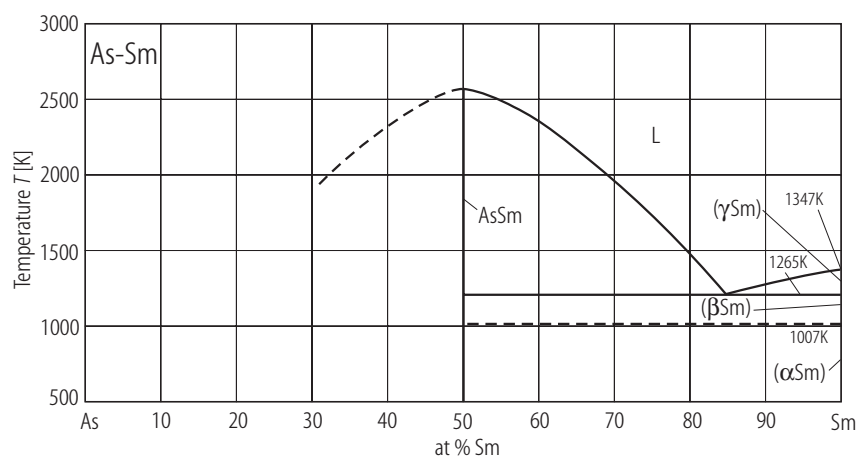


Fig. 1. As–Sm. Partial phase diagram [Massalski].

### References

- [87 Rus] Rustamov, P.G., Ilyasov, T.M., Mamedov, A.I.: Inorg. Mater. **23** (1987) 1714  
 [Massalski] Massalski, T.B., (ed.): “Binary Alloy Phase Diagrams”, Second Edition, The Materials Information Society, ASM International, Materials Park, Ohio (1992)