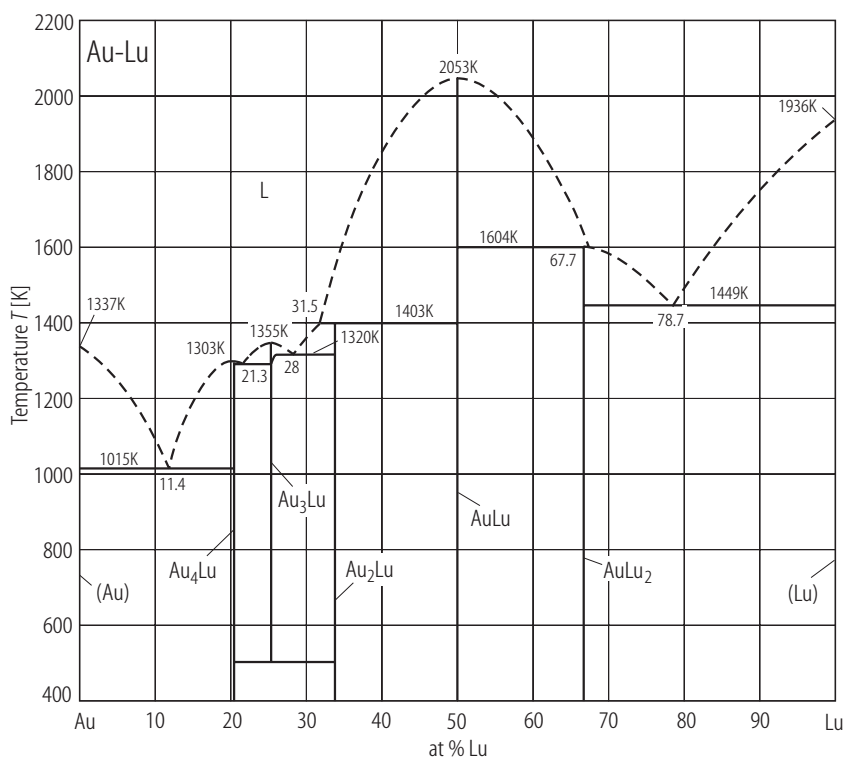


## Au – Lu (Gold – Lutetium)

### Phase diagram

[Moffatt] had constructed a hypothetical phase diagram with almost no knowledge of the liquidus temperatures. Several years later Gschneidner et al. [92 Gsc] started from a better basis. McMasters et al. [71 McM], using thermal analysis, determined some melting temperatures. Starting from this, more realistic basis, Gschneidner et al. [92 Gsc] have proposed a hypothetical phase diagram, which is reproduced in Fig. 1.

**Figure**



**Fig. 1. Au–Lu.** Tentative phase diagram [92 Gsc].

### References

- [71 McM] McMasters, O.D., Gschneidner Jr., K.A., Bruzzone, G., Palenzona, A.: *J. Less-Common Met.* **25** (1971) 135
- [92 Gsc] Gschneidner, K.A., Calderwood, F.W., Okamoto, H., Massalski, T.B.: [Massalski]
- [Massalski] Massalski, T.B., (ed.): “Binary Alloy Phase Diagrams” Second Edition, The Materials Information Society, ASM International, Materials Park, Ohio (1992)
- [Moffatt] Moffatt, W.G., (ed.): “Handbook of Binary Phase Diagrams”, Business Growth Services, General Electric Co., Schenectady, New York (1976)