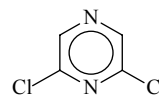


492 **C₄H₂Cl₂N₂**
ED, *ab initio*
calculations

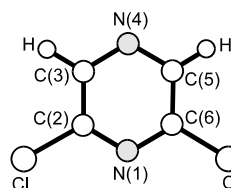
2,6-Dichloropyrazine**C_{2v}** assumed

r_a	Å ^{a)}	θ_a^0	deg ^{a)}
N(1)–C(2)	1.336(2)	C(3)–N(4)–C(5)	117.2(2)
C(3)–N(4)	1.345(3)	C(2)–C(3)–N(4)	120.4(2)
C–C	1.393(4)	C–C–Cl	120.0(3)
C–H	1.073(11)	C–C–H	119.3(14)
C–Cl	1.738(2)	N(1)–C(2)–C(3) ^{b)}	123.8(3)
		C(2)–N(1)–C(6) ^{b)}	114.4(3)

The structural parameters were determined by supplementing experimental data with restraints based on the results of MP2/6-311G** calculations.
The nozzle was at 443 K.

^{a)} Estimated standard errors.

^{b)} Dependent parameter.



Morrison, C.A., Smart, B.A., Parsons, S., Brown, E.M., Rankin, D.W.H., Robertson, H.E., Miller, J.: J. Chem. Soc., Perkin Trans. 2 (1997) 857.