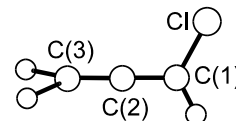
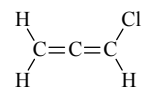


352
MW**C₃H₃Cl****1-Chloro-1,2-propadiene**
Chloroallene**C_s**

r_0	Å	θ_0	deg
C(1)=C(2)	1.301 ^{a)}	C(1)=C(2)=C(3)	180.0 ^{a)}
C(2)=C(3)	1.309 ^{a)}	C(2)=C(1)-Cl	122.6(3)
C(1)-Cl	1.738(11)	C(2)=C(1)-H	124.3 ^{a)}
C(1)-H	1.083 ^{a)}	C(2)=C(3)-H	120.8 ^{a)}
C(3)-H	1.086 ^{a)}		

^{a)} Assumed.Ogata, T., Niide, Y.: J. Chem. Soc., Faraday Trans. **92** (1996) 4889.