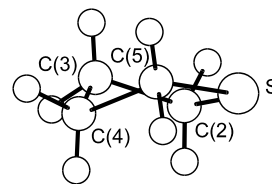


569
MW**C₄H₈S****Tetrahydrothiophene****C₂**

r_0	Å ^{a)}	θ_0	deg ^{a)}
C(2)–C(3)	1.528(14)	C–S–C	94.0(6)
C(3)–C(4)	1.533(11)	S–C–C	106.0(5)
S–C(2)	1.838(9)	C–C–C	106.2(8)
C–H	1.090 ^{b)}	H–C(3)–H	112.0 ^{b)}
		H–C(2)–H	111.0 ^{b)}
		C(3)–C(4)–C(5)...C(2) ^{c)}	27.7(7)

^{a)} Estimated standard errors.^{b)} Assumed.^{c)} Twisted ring dihedral angle.

Margulés, L., Sanz, M.E., Kassi, S., Petitprez, D., Wlodarczak, G.,
López, J.C., Boggs, J.E.: Chem. Phys. **263** (2001) 19.

[II/25C \(3, 1768\)](#)