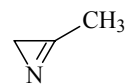
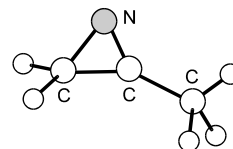


379
MW C_3H_5N 3-Methyl-2*H*-azirine C_s

The molecule was produced by pyrolyzing *N*-chloro-2-methylaziridine and was identified as the species shown in the figure, based on a comparison of the observed molecular constants with *ab initio* calculated ones. The potential barrier to methyl internal rotation was determined to be $V_3 = 1315 \text{ cal mol}^{-1}$ ($5.502 \text{ kJ mol}^{-1}$).



Sugie, M., Takeo, H., Matsumura, C.: J. Mol. Struct. **413-414** (1997) 387.