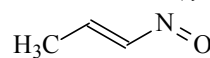
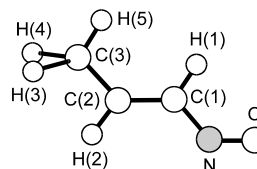


381
MW $\text{C}_3\text{H}_5\text{NO}$ *(E)*-1-Nitroso-1-propene C_s (*syn*)

r_0	Å		θ_0	deg	
N=O	1.220 ^{a)}		C(2)=C(1)–N	116.1 ^{a)}	
C(2)–C(3)	1.501 ^{a)}		C(2)–C(3)–H(5)	111.2 ^{a)}	
C(1)–H(1)	1.081 ^{a)}		C(2)–C(3)–H(3,4)	111.2 ^{a)}	
C(3)–H(5)	1.085 ^{a)}		C(2)=C(1)–H(1)	120.5 ^{a)}	
C(3)–H(3,4)	1.089 ^{a)}		C(1)=C(2)–H(2)	119.0 ^{a)}	
C(2)–H(2)	1.091 ^{a)}			I	II
	I	II	C(1)=C(2)–C(3)	124.86(3)	124.3 ^{a)}
C(1)=C(2)	1.359(9)	1.352(8)	C–N=O	112.9 ^{a)}	113.49(5)
C–N	1.409(9)	1.415(8)			

Atom	$ a_s $ [\AA]	$ b_s $ [\AA]
N	1.226	0.442

Two sets of structural parameters I and II were reported.

^{a)} Assumed.Sakaizumi, T., Tanaka, H., Hirano, K., Kuze, N., Ohashi, O.: J. Mol. Spectrosc. **194** (1999) 79.