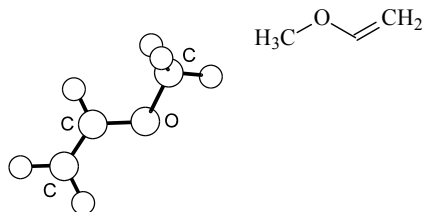


404	C₃H₆O	Methyl vinyl ether	C_s (<i>anti</i>)
MW		Methoxyethene	(effective symmetry class)

The less stable conformer is effectively planar *anti* with a low barrier between two *gauche* forms. The threefold potential barrier to CH₃ internal rotation is determined to be $V_3 = 427.516(71) \text{ cm}^{-1}$.



McWhorter, D.A., Cupp, S.B., Lee, C.Y., Pate, B.H.: J. Mol. Spectrosc. **193** (1999) 150.

[II/25C \(3, 1267\)](#)