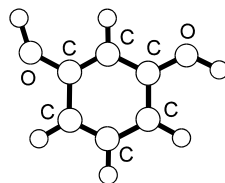
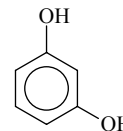
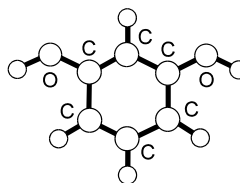
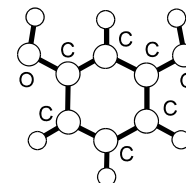


722
MW**C₆H₆O₂****Resorcinol**1,3-Dihydroxybenzene
1,3-Benzenediol**C_s** (*anti-syn*)
C_{2v} (*anti-anti*)
C_{2v} (*syn-syn*)

All three possible conformers *anti-syn*, *anti-anti* and *syn-syn* were detected. Their energy differences are determined to be $\Delta E[(\textit{anti-anti}) - (\textit{anti-syn})] = 20(70)$, $\Delta E[(\textit{syn-syn}) - (\textit{anti-syn})] = 450(70)$ and $\Delta E[(\textit{syn-syn}) - (\textit{anti-anti})] = 410(70) \text{ cm}^{-1}$.

*anti-syn**anti-anti**syn-syn*

Melandri, S., Maccaferri, G., Caminati, W., Favero, P.G.: Chem. Phys. Lett. **256** (1996) 513.