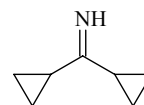


809
MW

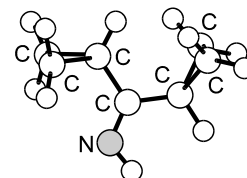
$C_7H_{11}N$

(Dicyclopropylmethylene)amine
(Dicyclopropylmethane)imine
 α -Cyclopropylcyclopropanemethanimine

C_s



One conformer shown in the figure was detected.



Songe, P., Marstokk, K.-M., Møllendal, H.: Acta Chem. Scand. **53** (1999) 291.