

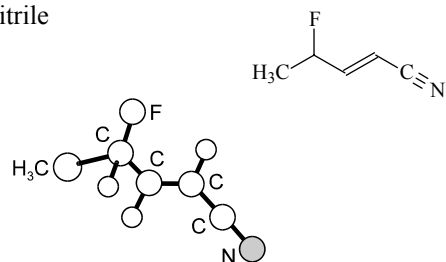
635
MW

$\text{C}_5\text{H}_6\text{FN}$

***trans*-1-Cyano-3-fluorobut-1-ene**
(*E*)-4-Fluoro-2-pentenitrile

C_1

The stable conformation for the molecule is the one with the fluorine atom lying in the $\text{C}=\text{CCN}$ plane.



Kassi, S., Grée, D., Grée, R., Duflot, D., Petitprez, D., Wlodarczak, G.: J. Mol. Spectrosc. **202** (2000) 19.