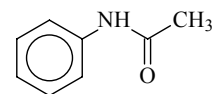


840  
MW**C<sub>8</sub>H<sub>9</sub>NO****Acetanilide**  
*N*-Phenylacetamide**G<sub>6</sub>**

The conformer with the methyl group *anti* to the phenyl group was detected. All the atoms of the peptide group and the carbon of the methyl group are coplanar to the ring. The potential barrier to methyl internal rotation  $V_3$  is 0.59 kJ mol<sup>-1</sup>.



Caminati, W., Maris, A., Millimaggi, A.: New J. Chem. **24** (2000) 821.