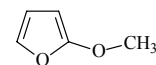
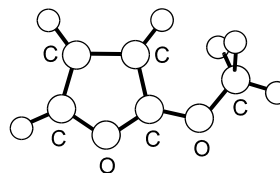


637
MW $C_5H_6O_2$

2-Methoxyfuran

 C_s

One conformer *syn* was detected; the methyl group is *syn* to the nearest C=C bond of the ring. This conformer is at least 3 kJ mol^{-1} more stable than any others. The barrier to the CH_3 internal rotation is at least 14 kJ mol^{-1} .



Beukes, J.A., Marstokk, K.-M., Møllendal, H.: J. Mol. Struct. **567-568** (2001) 19.