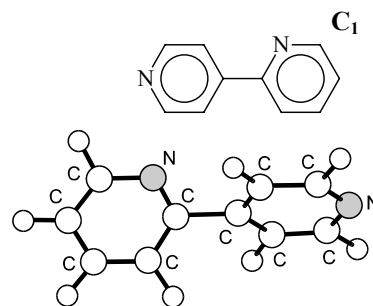


882
MW**C₁₀H₈N₂****2,4'-Dipyridyl**
2,4'-Bipyridine

Two pyridine rings are tilted with respect to each other by 22.7°. Each rotational transition is split into two-component lines due to the torsional motion connecting 4 equivalent minima. The lower of the two barriers to inversion, corresponding to the planar configuration, is calculated to be 45 cm⁻¹.



Favero, L.B., Favero, P.G., Dell'Erba, A., Caminati, W.: Chem. Phys. Lett. **274** (1997) 47.