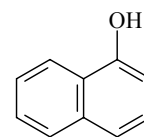
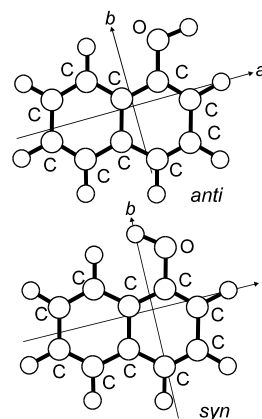


883  
MW $C_{10}H_8O$ **1-Hydroxynaphthalene**  
1-Naphthol $C_s$  (*syn*)  
 $C_s$  (*anti*)

The rotational spectra of both *syn* and *anti* conformers were detected. Theoretical calculations at MP2/6-31G\*\* level suggested that the *syn* conformer is slightly nonplanar in its equilibrium configuration, a property which is not inconsistent with its rotational constants.



Whitham, C.J., Jackson, R.J., Brown, J.M.: J. Mol. Spectrosc. **195** (1999) 172.