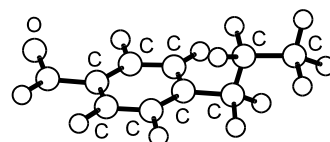
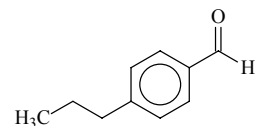


886
MW

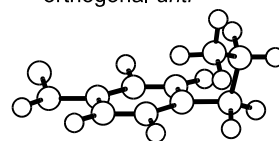
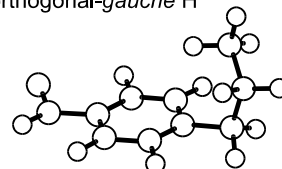
 $C_{10}H_{12}O$

***p*-Propylbenzaldehyde**
4-Propylbenzaldehyde

C_s (orthogonal-*anti*)
 C_1 (orthogonal-*gauche* H)
 C_1 (orthogonal-*gauche* O)


 orthogonal-*anti*

Three conformers were identified: orthogonal-*anti*, orthogonal-*gauche* H and orthogonal-*gauche* O.


 orthogonal-*gauche* H

 orthogonal-*gauche* O

Kelly, J.A., Bohn, R.K., True, N.S.: J. Mol. Struct.
556 (2000) 197.