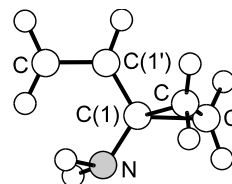
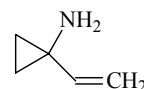


656
MW C_5H_9N **1-Amino-1-ethenylcyclopropane**
1-Ethenylcyclopropan-1-amine C_s (*sp-ap*)

The prevailing *sp-ap* conformer (*sp* conformation of the cyclopropyl group and the lone pair at the N atom with respect to the N–C bond, *ap* conformation of the cyclopropyl and vinyl groups with respect to the C(1)–C(1') bond) was assigned. It has a symmetry plane with the C–N bond and the C=C double bond *syn* to each other. In this conformation, both of the hydrogen atoms of the amino group may be involved in weak intramolecular hydrogen bonds with the π electrons of the double bond.



Marstokk, K.-M., de Meijere, A., Møllendal, H., Wagner-Gillen, K.: J. Phys. Chem. A **104** (2000) 2897.