

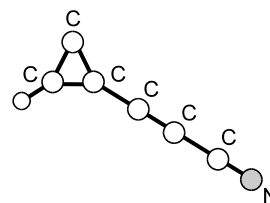
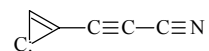
694
MW

 C_6HN

2-(Cyanoethynyl)-2-cyclopropen-1-ylidene

 C_s

The molecule has a planar ring-chain structure and singlet electronic ground state.



McCarthy, M.C., Grabow, J.-U., Travers, M.J., Chen, W.,
Gottlieb, C.A., Thaddeus, P.: *Astrophys. J.* **513** (1999) 305.