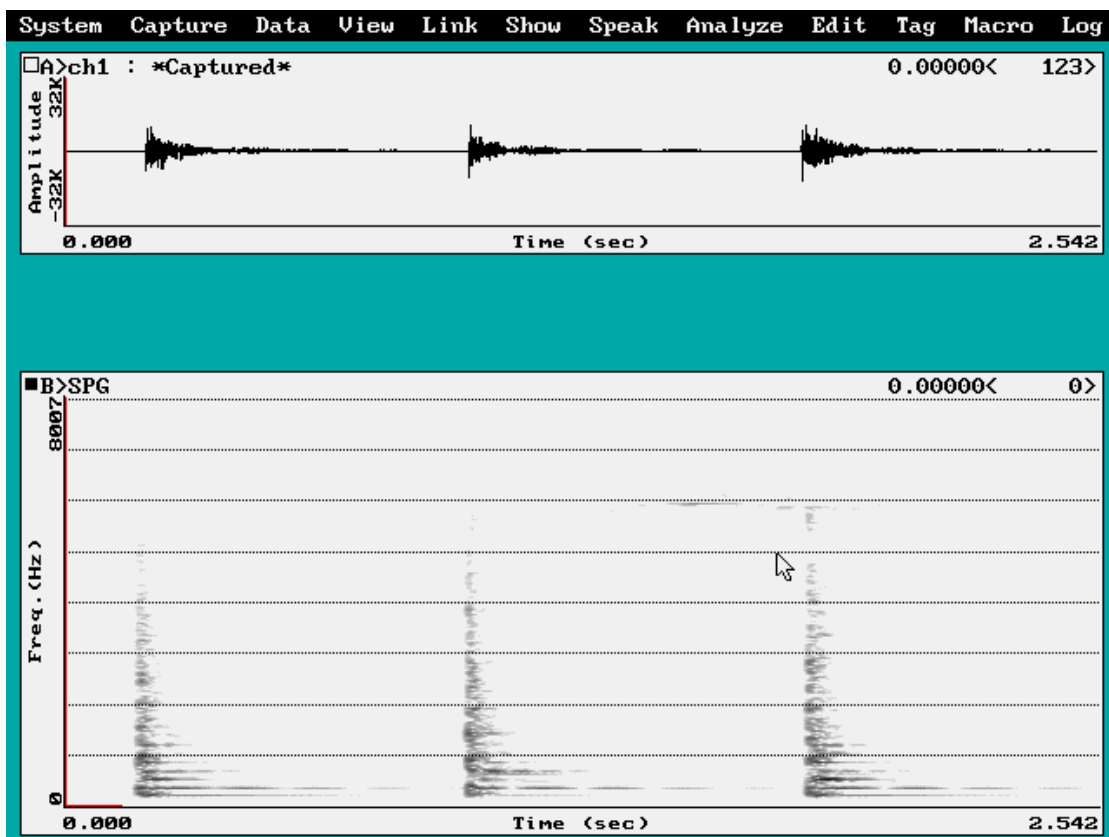


ANALISI ACUSTICA DEGLI STRUMENTI MUSICALI

Viene di seguito riportata un'analisi acustica , con relativo sonagramma, delle sonorità prodotte da alcuni strumenti musicali maggiormente utilizzati per le attività di allenamento della percezione uditiva. Il seguente lavoro è stato svolto presso la S.C.U. Audiologia – Foniatria dell'A.S.O. S. Giovanni Battista di Torino dalla Dott. Nudo, dalla Dott. Vernero e da alcune studentesse del Corso di Laurea in Logopedia.

TAMBURELLO A TELAIO

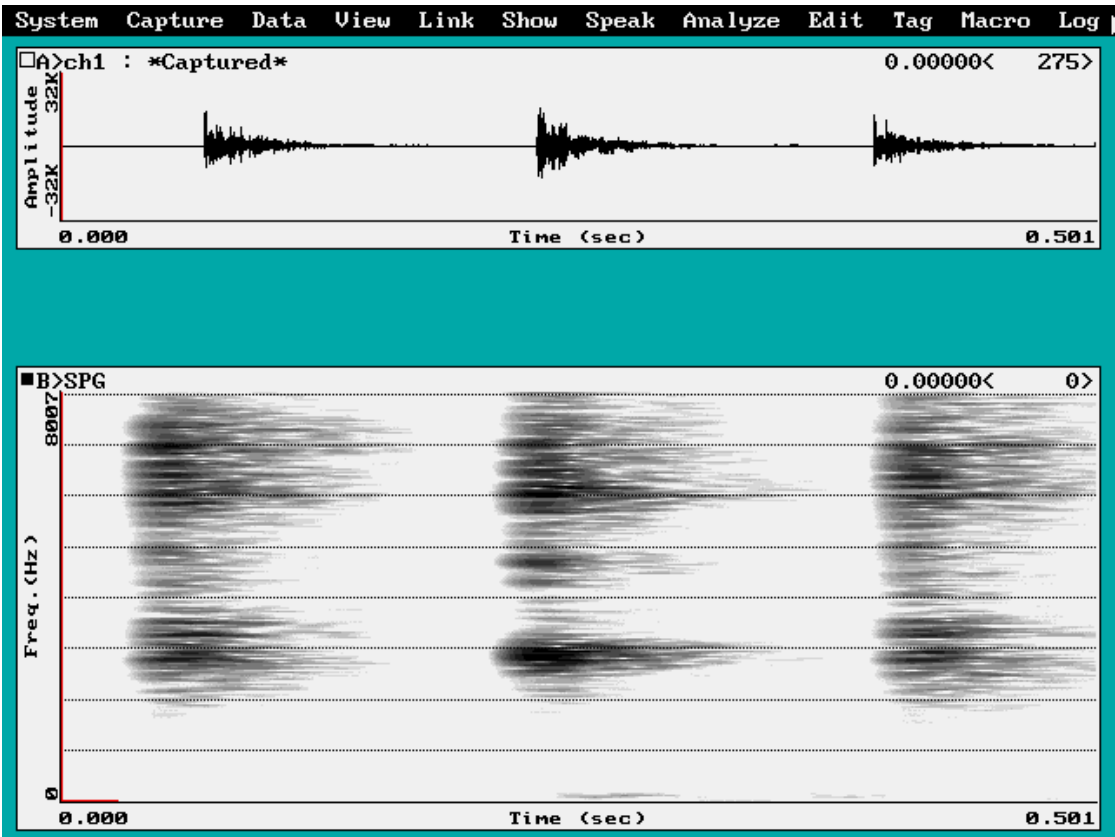


0-5000 Hz

Fo: 160 Hz e armoniche fino a 1000 Hz

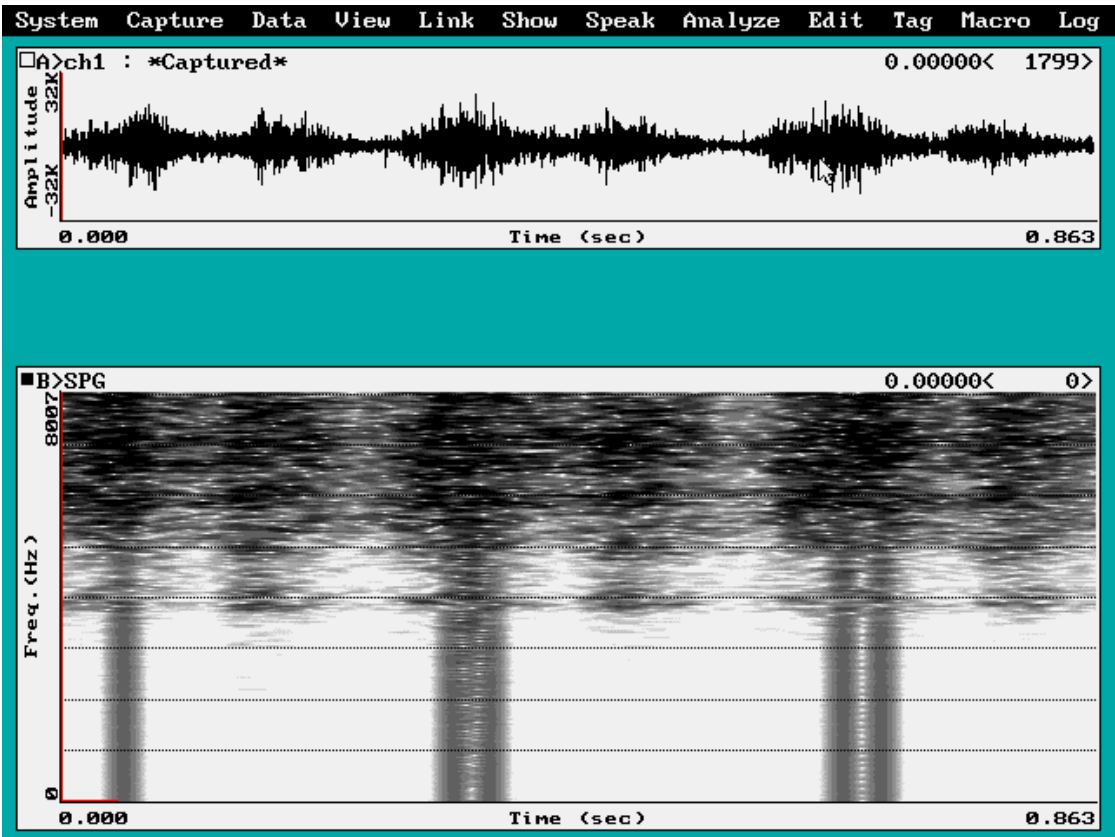
Rumore: Fo-6000 Hz

NACCHERE



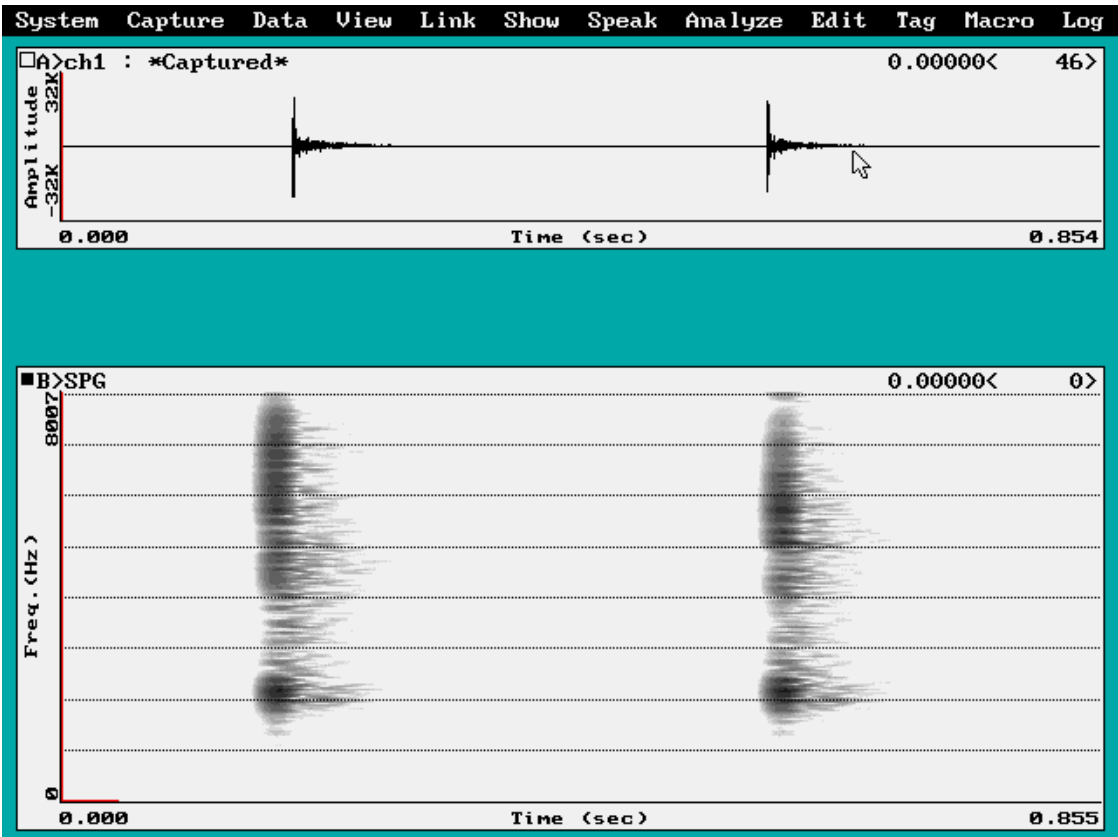
2000 – 8000 Hz

MARACAS



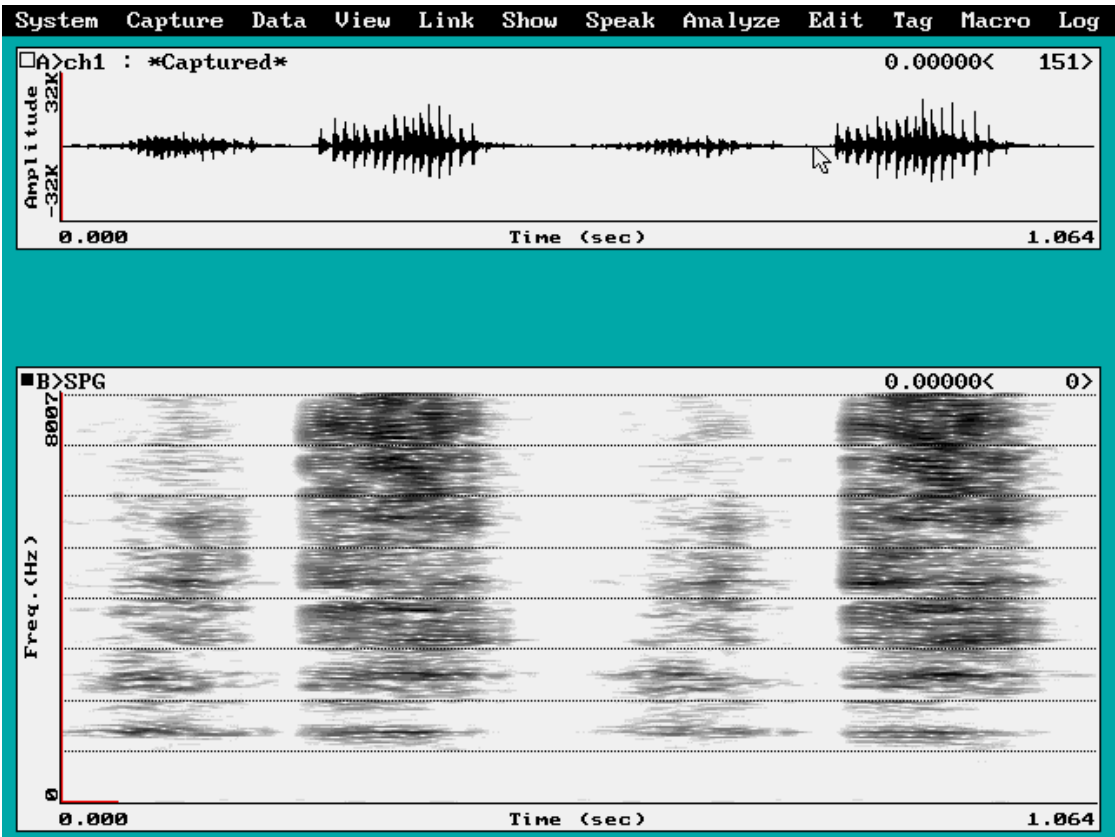
0 – 8000 Hz

LEGNETTI



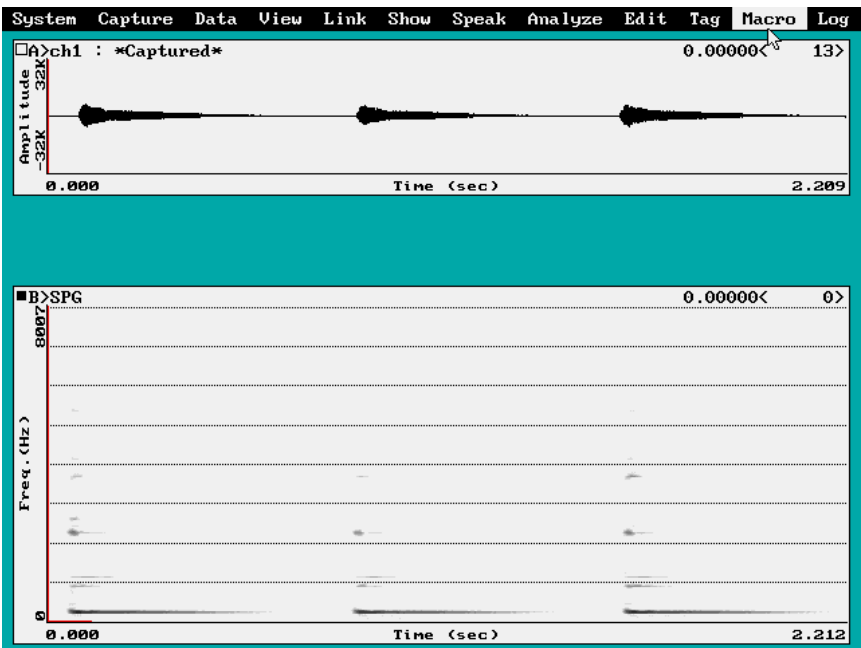
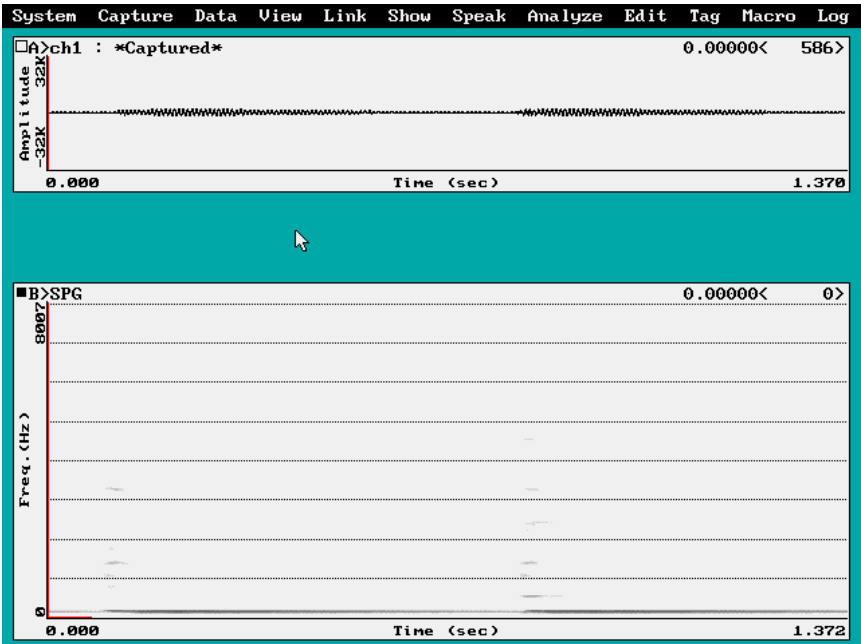
1500 – 8000 Hz

GUIRO



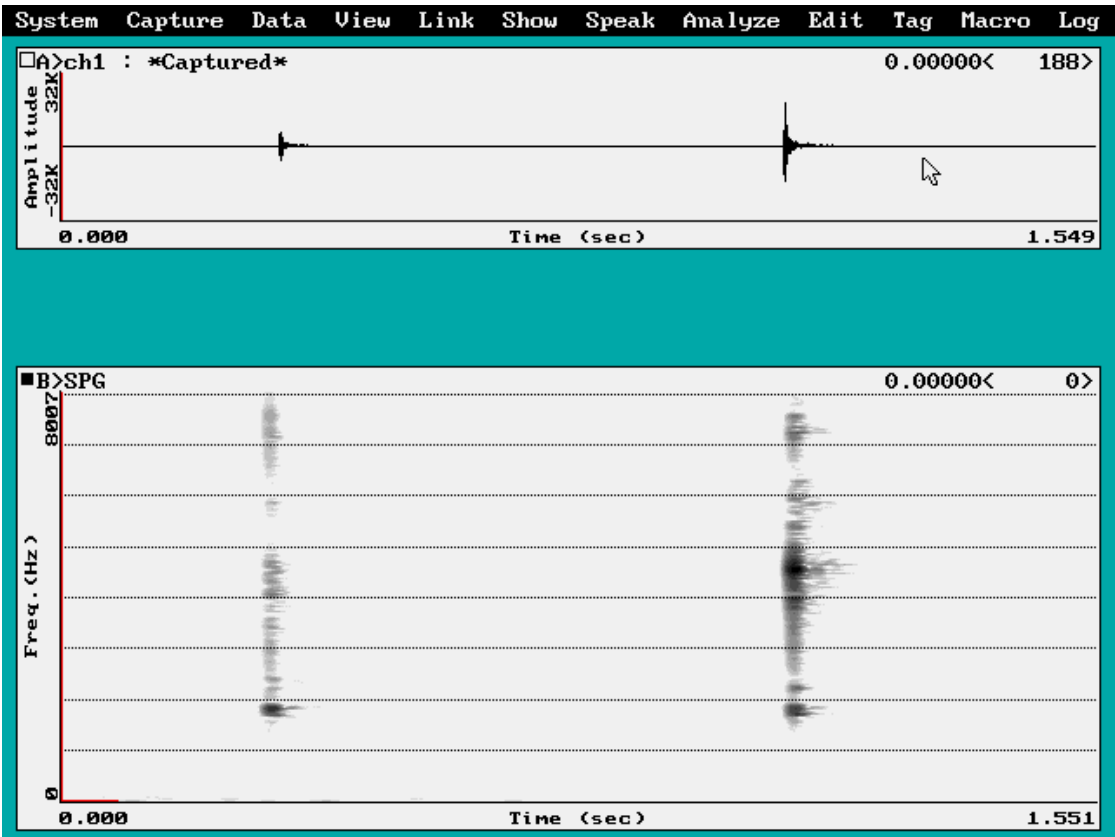
1500 – 8000 Hz
Rumore: 1000 – 8000Hz

PIASTRA SONORA



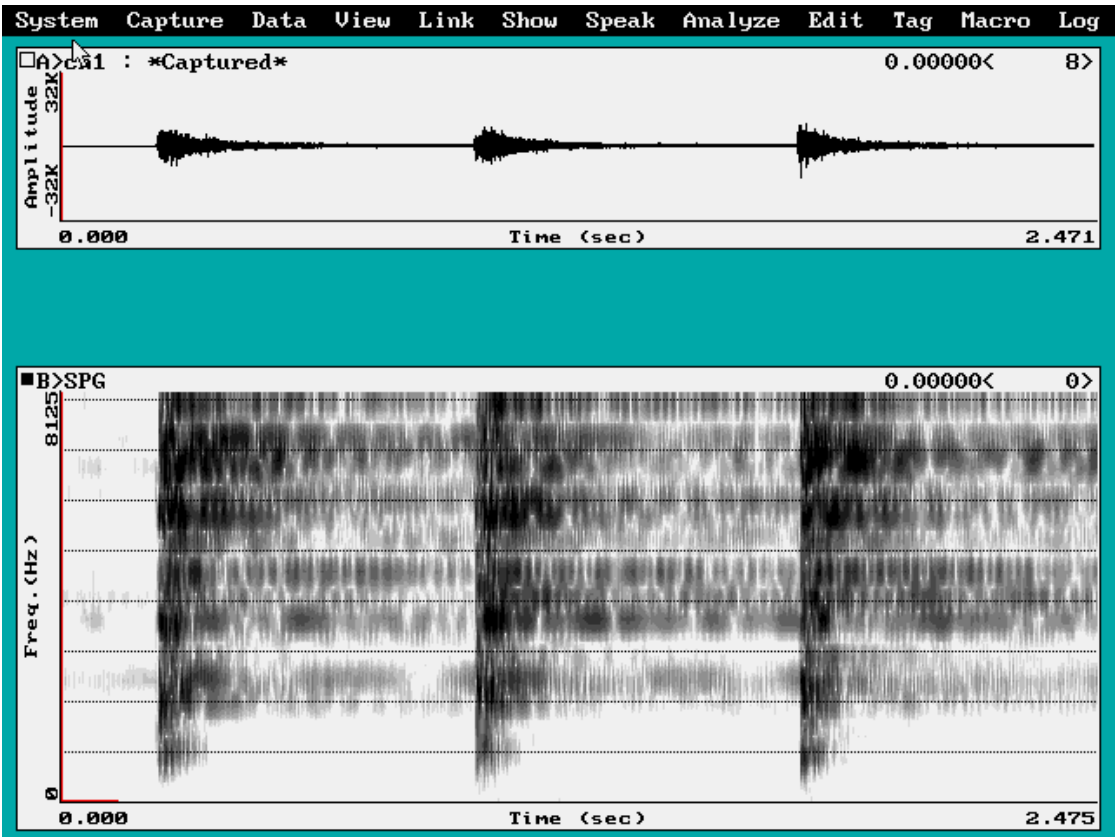
DO: 200 Hz ; F_0 200 Hz ;
LA: 0 – 5500 Hz ; F_0 250 Hz ;

TUBO BITONALE



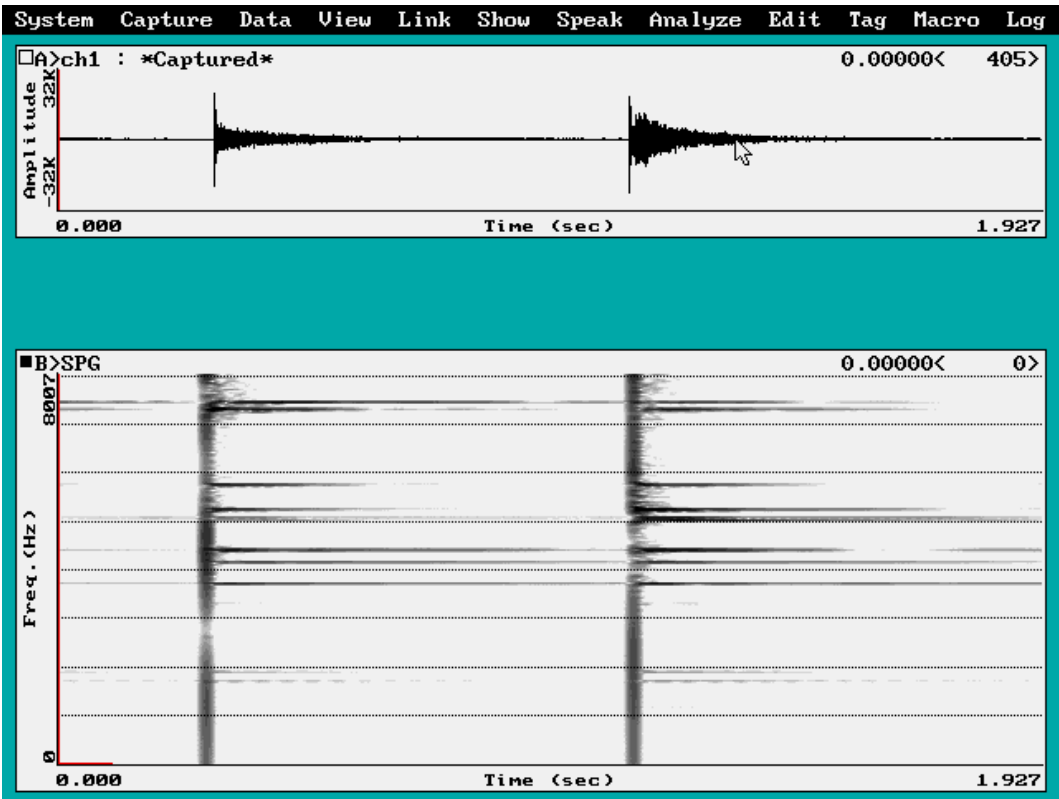
1500 – 8000 Hz

PIATTI



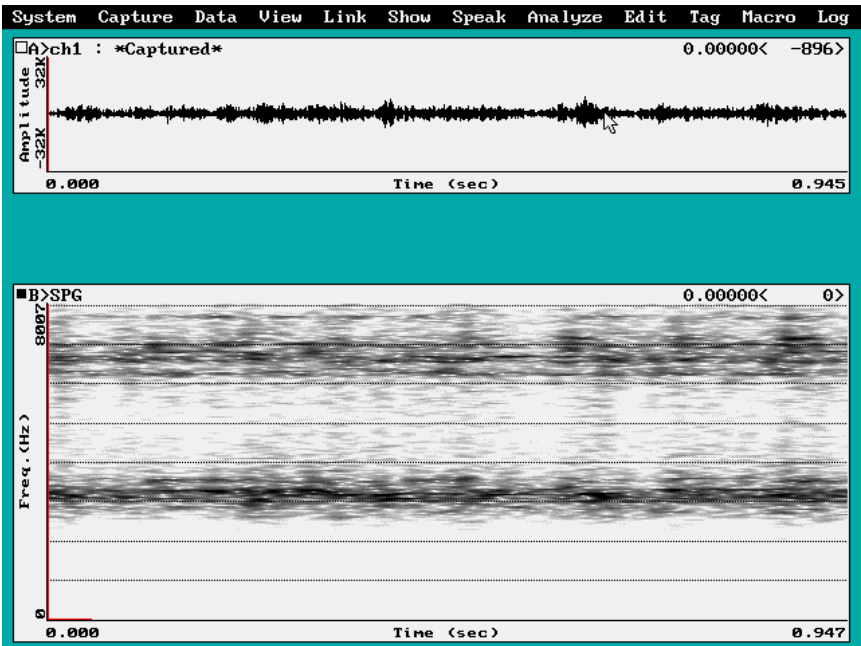
500 – 8000 Hz

TRIANGOLO



0 – 8000 Hz

CORONA DI SONAGLI



2500 – 8000 Hz