

LISA

Geo-Software GmbH

Ludwig-Erhard-Ring 30
D 54296 Trier
www.lisa-geosoftware.de



Installation of LISA software

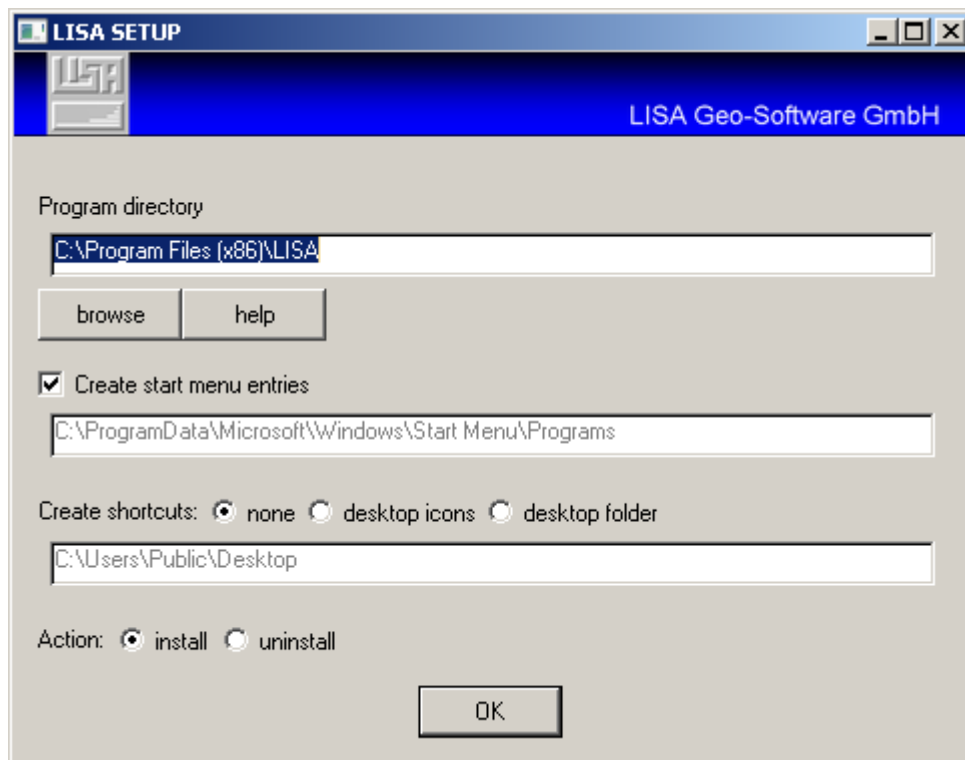
Please log in with full administrator rights, either the installation will not work properly!

The LISA SETUP requires MS Windows 7 or higher. Running the setup will create folders, copy files from the data carrier and optionally create entries in the start menu and desktop icons. No modifications are made within the Windows registry database.

Usually, our software should be installed in the Windows program directory (for instance, *c:\program files (x86)\lisa*). The folder LISA will be created and several files will be copied into that directory and some subdirectories.

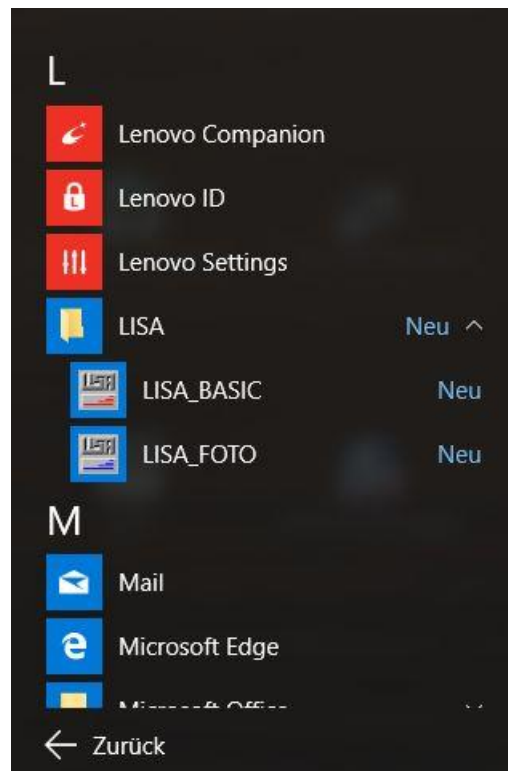
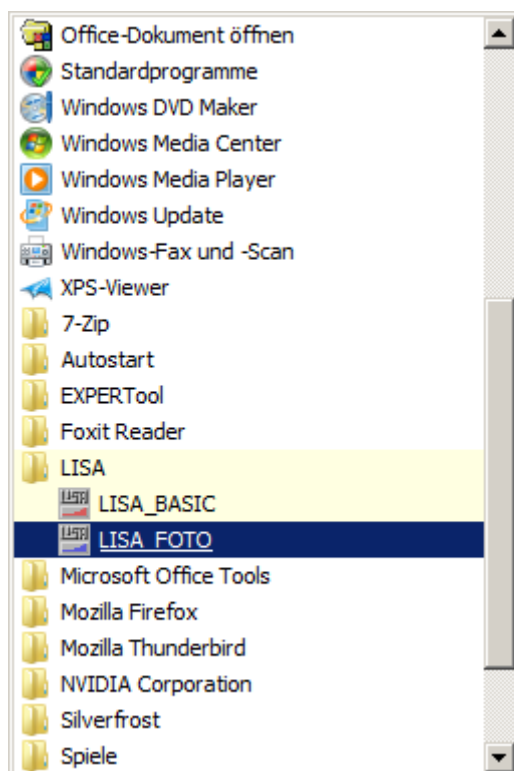
Start menu: The respective directory is shown. The setup creates a subdirectory LISA and within that the necessary LNK files.

Desktop icons: You can select whether these should be placed directly onto the desktop or into a desktop folder. The respective directory is shown. The necessary LNK files are created within this directory or within a new subdirectory LISA.



LISA Geo-Software GmbH
Sitz: D 54296 Trier (Germany)
Amtsgericht Wittlich: HRB 40926
Geschäftsführerin Elke Giese-Linder, Trier

Bankverbindung:
Sparkasse Trier
BLZ 585 501 30
Konto-Nr. 100 9562



Examples for start menu entries (left: MS Windows 7, right: MS Windows 10)

De-installation of LISA software

The LISA SETUP can also be used for a complete de-installation of LISA software. Just start LISA SETUP, then select the program directory and the option "uninstall".



Attention: All data in the program directory and in all subdirectories will be deleted!